

The Role of PSA in Data Accessibility

MINERVA ELOISA P. ESQUIVIAS

(Assistant National Statistician)

Officer-in-Charge

Censuses Technical Coordination Office

2024 Regional Data Festival – Visayas Cluster

28 October 2024

Outline



The Philippine Statistics Authority's:

- Mandates
- Products and Services
- Data Users
- Methods of Requesting Data



The Philippine Statistics Authority



Bureau of Agricultural Statistics
Bureau of Labor and Employment Statistics
National Statistical Coordination Board
National Statistics Office



*Republic Act No. 10625
An Act Reorganizing the
Philippine Statistical System*



*The PSA is an attached agency of the
National Economic and Development
Authority (NEDA)*



Mandates



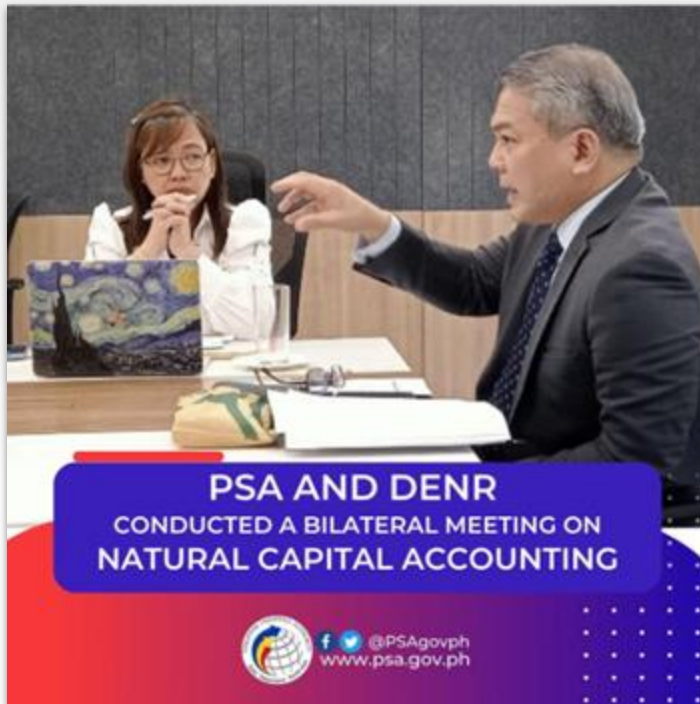
**PHILIPPINE
IDENTIFICATION
SYSTEM**

PSA is primarily responsible for the implementation of the objectives and provisions of:

- RA No. 10625 (Philippine Statistical Act)
- RA No. 11055 (Philippine Identification System)
- RA No. 11315 (Community-Based Monitoring System)
- RA No. 11995 (Philippine Ecosystem and Natural Capital Accounting System (PENCAS) Act)

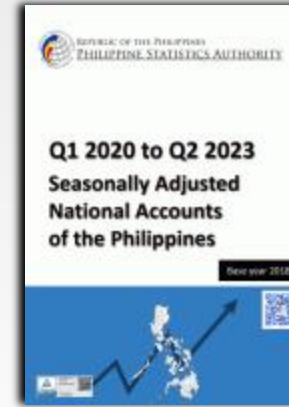
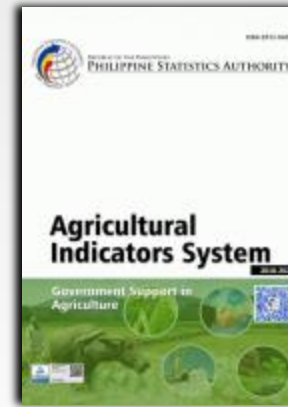


Mandates



Plan, develop, prescribe, disseminate and enforce policies, rules and regulations and coordinate government-wide programs governing the production of official statistics, general-purpose statistics and civil registration services, and inclusive identification system.

Mandates



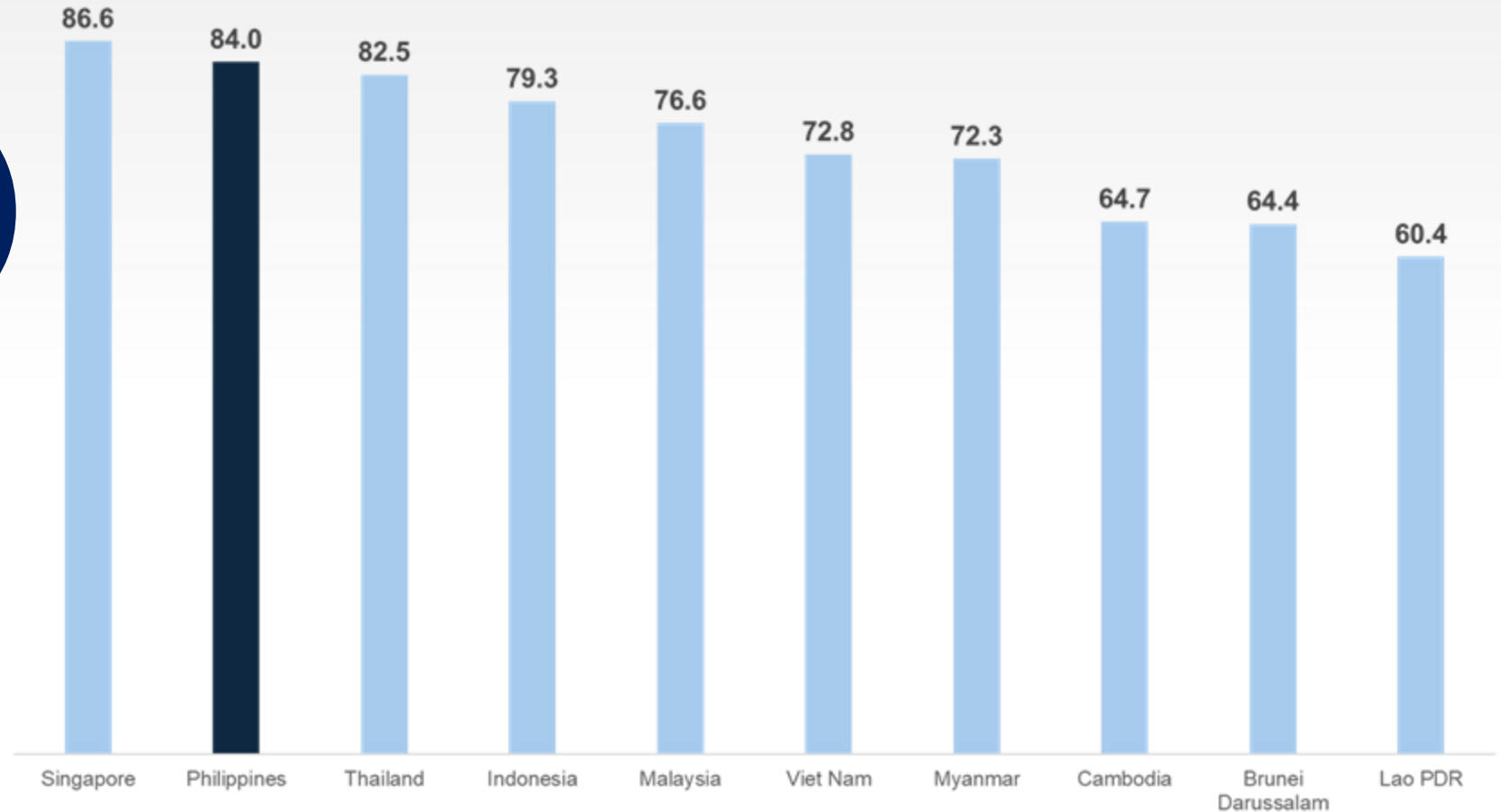
Primarily responsible for all national censuses and surveys, sectoral statistics, community-based statistics, consolidation of selected administrative recording systems, and compilation of national accounts.



Statistical Performance Indicators



2ND IN ASEAN



The Philippines ranked second in the region, with Singapore leading by 2.6 points.



Products and Services



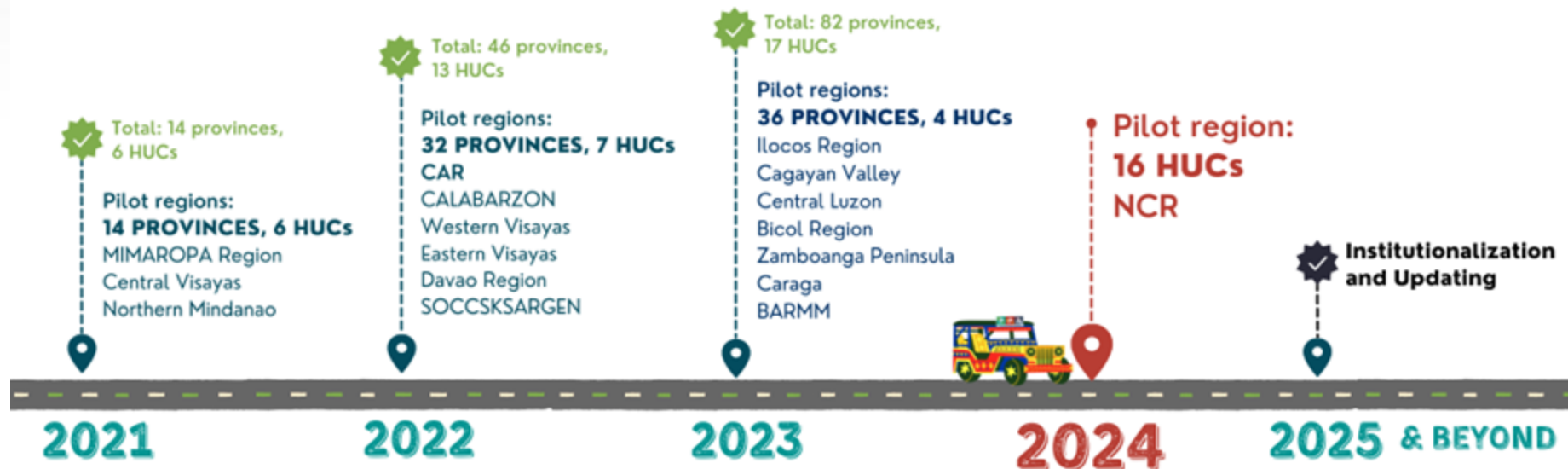
- National Accounts (Quarterly/Annual)
- Establishment-based statistics
- Household-based statistics
- Administrative-based statistics
- Civil Registration Services
- Statistical Standards and Classifications Systems
- Statistical Survey Review and Clearance System
- Statistical Frameworks and Indicators Systems
- Statistical Dissemination and Advocacy
- Philippine Identification System
- PSA OpenSTAT
- PSA Data Archive (PSADA)
- PSA Data Enclave



Provincial Product Accounts (PPA)

PROVINCIAL PRODUCT ACCOUNTS TIMELINE

In 2024, a total of **82 provinces and 33 highly urbanized cities (HUCs)** will release the Provincial Product Accounts.

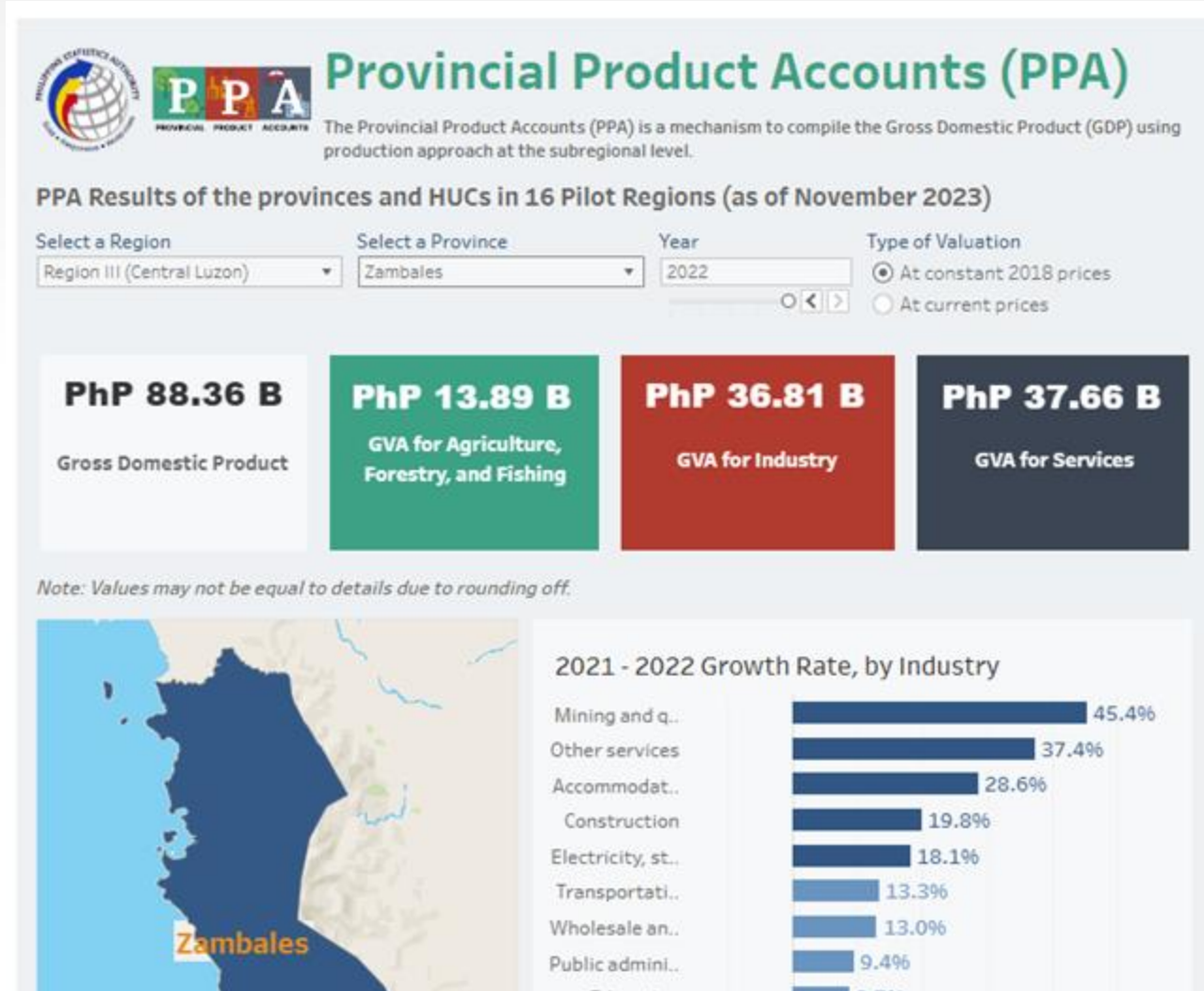


The PPA aims to provide timely and reliable data on the economic performance of provinces and HUCs in the country for a more evidence-based local level planning and policy interventions.

Provincial Product Accounts (PPA)

Dashboard

<https://psa.gov.ph/statistics/ppa/dashboard>

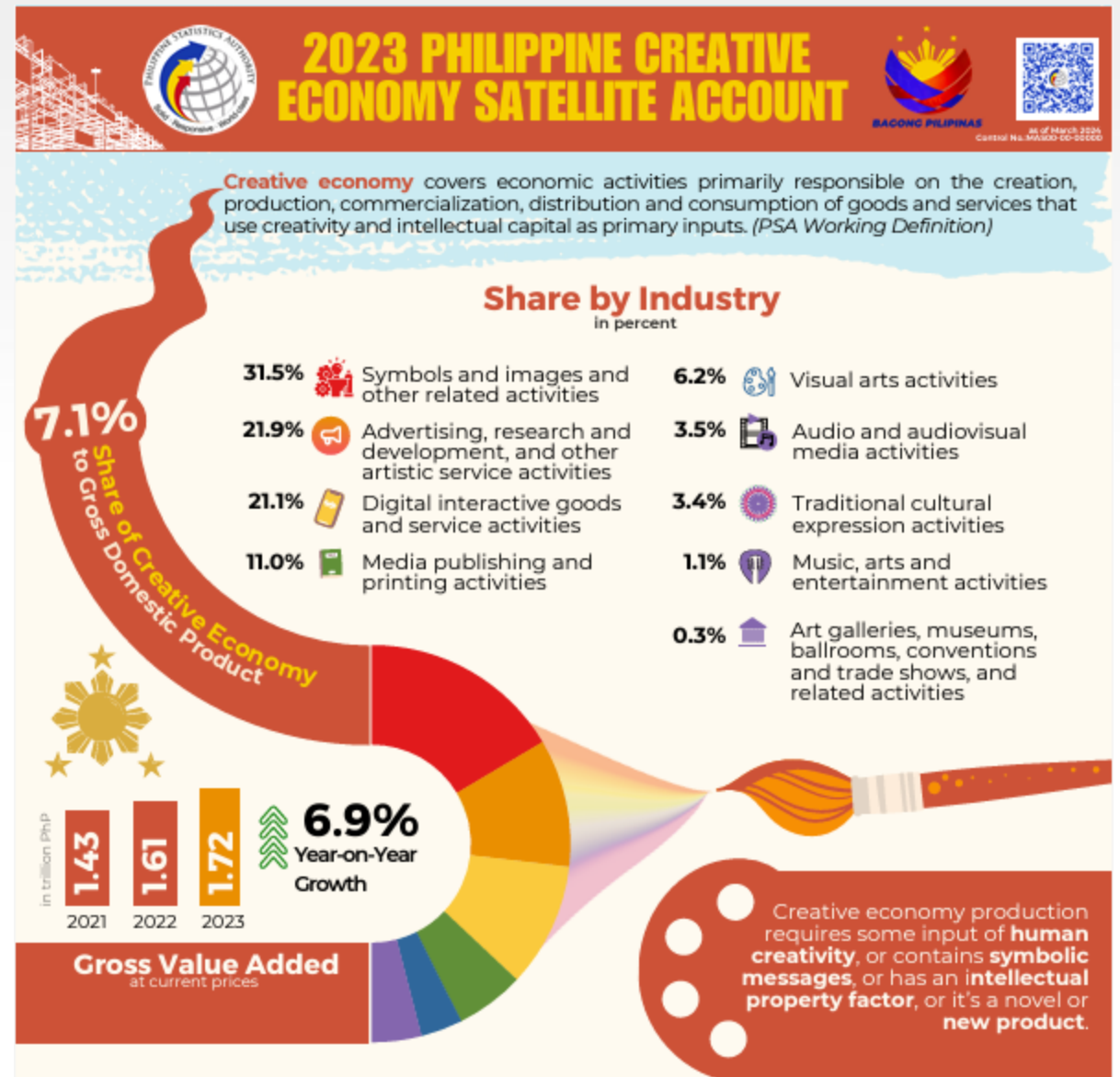


Creative Economy Satellite Account



Creative Economy covers economic activities primarily responsible on the creation, production, commercialization, distribution and consumption of goods and services that use creativity and intellectual capital as primary inputs. A creative goods and services should satisfy any of the following:

- Its production requires some input of human creativity;
- It contains symbolic messages;
- It has an intellectual property factor; or
- It is a novel or a new product.



PENCAS

Objectives

- Provide a system for the collection, compilation, and development of natural capital accounts towards their progressive integration in macroeconomic indicators;
- Provide tools and measures that contribute to the protection, conservation, and restoration of ecosystems; and
- Provide valuation of ecosystem services

PENCAS



The PSA shall have the overall responsibility for the institutionalization and progressive implementation of PENCAS following the SEEA framework.

- develop and maintain the compilation of natural capital accounts as well as the environmental and ecosystem accounts;
- coordinate with and provide technical support in the generation, compilation, and use of environmental accounts, statistics, and indicators;
- designate the required environment and economic statistics in agencies and bureaus responsible for generating data; and
- create a service to be referred to as Environment, Natural Resources and Ecosystem Account Service (ENREAS)



National ID System



National ID System Operations Updates as of 11 October 2024

Registration
(Demographic and biometrics data capture)

90.4 million
• 98% of the 92 million target

PSN Generation

86.3 million
• Operations began in Jan 2021

Dispatched NID Cards

55.5 million
• Operations began in Apr 2021

Delivered NID Cards

54.2 million
• Operations began in May 2021

Issued Printed NID in paper form (ePhilID)

46.3 million
• Pilot implementation began in Sep 2022

Total Unique Access to Digital NID (DICT)

20.6 million
• Operations began in May 2024



Birth Registration Assistance Project



Total Submission for Verification

1,482,163

With Birth Records in PSA Database

247,054

Negative Results for Delayed Registration

1,190,357

Total New Registration

416,872

Data as of 04 October 2024



Community-Based Monitoring System



Objectives

- 1. Local-level:** An economic and social tool for use in the formulation and implementation of poverty alleviation and development programs that are specific, targeted, and responsive to the basic needs of each sector of the community.
- 2. National-level:** For use of national government agencies in generating updated and disaggregated data necessary in targeting beneficiaries.
- 3. Generation of local-level statistics:** Local Sustainable Development Goals (SDG) indicators, Multidimensional Poverty Index (MPI)



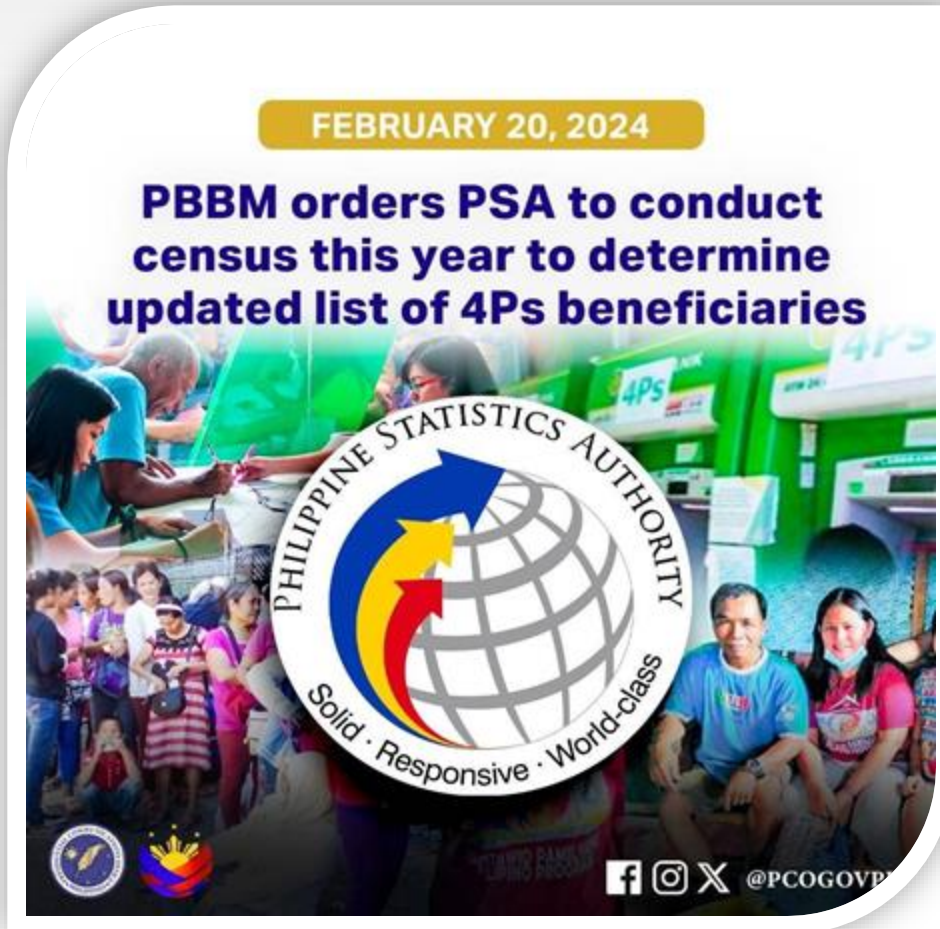
Community-Based Monitoring System



Community-Based Monitoring System

FEBRUARY 20, 2024

PBBM orders PSA to conduct census this year to determine updated list of 4Ps beneficiaries



PHILIPPINE STATISTICS AUTHORITY
Solid · Responsive · World-class

f i X @PCOGOVPH

NEWS RELEASE

PBBM orders PSA to conduct census this year to determine updated list of 4Ps beneficiaries

February 20, 2024
SHARE THIS STORY



President Ferdinand R. Marcos Jr. has ordered the Philippine Statistics Authority (PSA) and other concerned government agencies to immediately conduct a census through the Community-Based Monitoring System (CBMS) to make the government anti-poverty and social protection initiatives more responsive and effective.



2024

CENSUS OF POPULATION & COMMUNITY-BASED MONITORING SYSTEM

*Sa POPCEN at CBMS, Kasama Ka sa Pag-Unlad
Tungo sa Makabagong Pilipinas*

OBJECTIVES

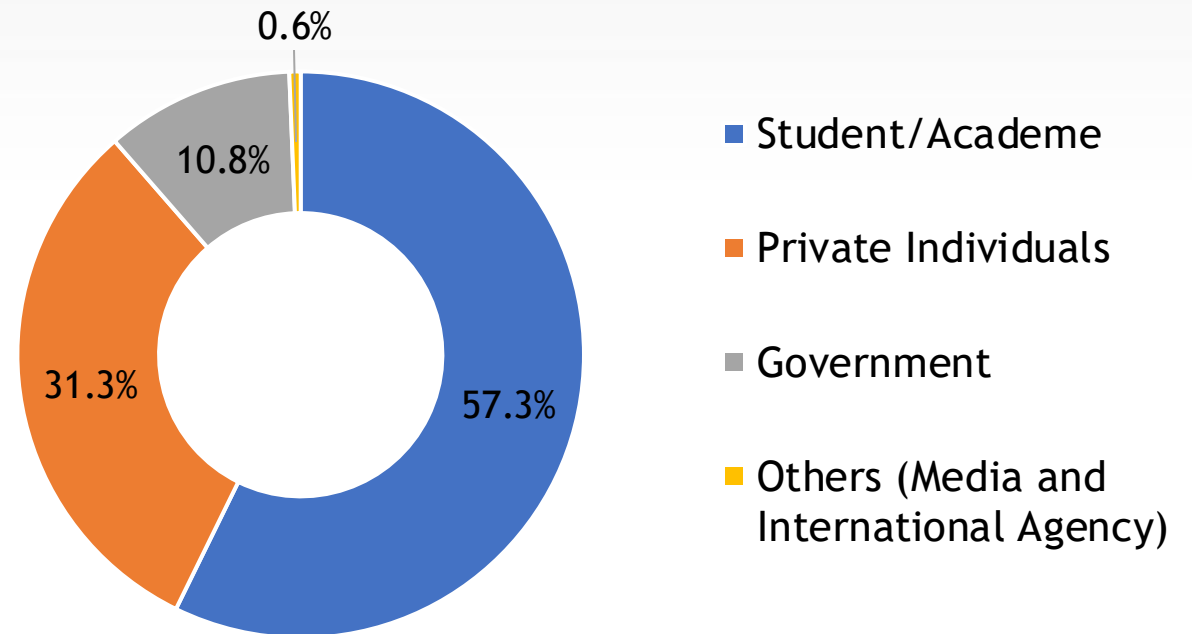
Through the **2024 POPCEN-CBMS**, we will be able to:

1. Update population statistics at the local and national level;
2. Update the list of beneficiaries of government social protection programs, and;
3. Help local government units create evidence-based projects and programs.

Data Users

Addressed Data Request by Affiliation (January to December 2023)

In 2023, PSA ha addressed a total of **9,429** data requests.



Methods of Requesting Data



Accomplishing the
Data Request Form

<https://psa.gov.ph/statistical-data-request-form>



Sending data request

- By email or through phone call
- By using Freedom of Information (e-FOI) Portal
- By visiting the Information Center or PSA Library
- By sending a letter request address to the National Statistician



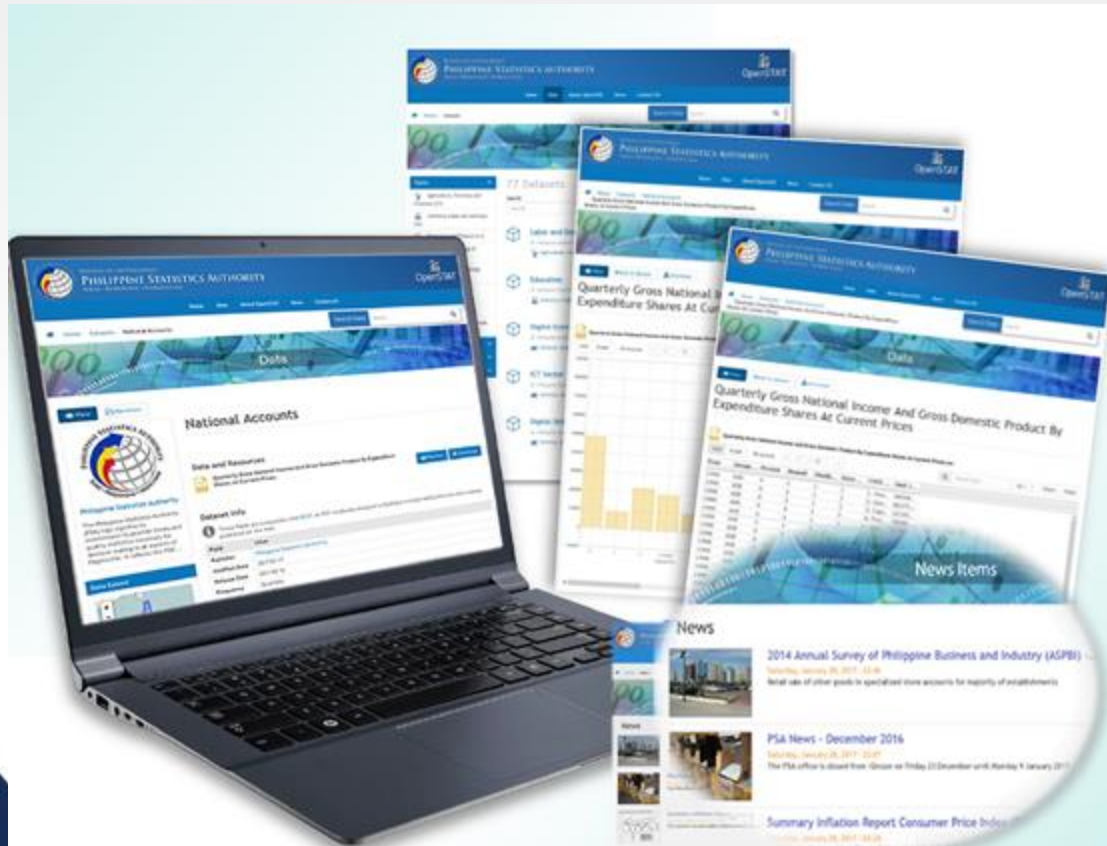
Data available on the
PSA website

OpenSTAT

OpenSTAT is an open data platform powered by DKAN, an open source application with a full suite of cataloging, publishing and visualization features. This system allows the PSA to share data under an open data license where data can be freely used, re-used and redistributed by anyone without any restrictions.



OpenSTAT



Features:

- Easy to use interface which publishes data in a variety of open file formats
- Allows previewing, searching and sorting of data in a spreadsheet format
- With built-in visualization tools (charts) and drag-and-drop dashboards
- Provides intuitive mapping capabilities through integrations with ArcGIS, Carto and other mapping software
- Provides API to retrieve data programmatically from an outside web service
- With metadata support using Data Catalog Vocabulary (DCAT), a standard vocabulary for describing datasets in Data catalogues.

Coverage:

- Economy and Finance
- Agriculture, Forestry and Fisheries
- Industry, Trade and Services
- Domestic and Foreign Trade
- Population and Social Conditions

Data Archive

The PSA Data Archive (PSADA) is a web-based cataloging system powered by the National Data Archive (NADA) application developed by the International Household Survey Network (IHSN). This system serves as a gateway to microdata and documentations of PSA's surveys, censuses and administrative-based statistics.



WHAT ARE THE CLASSIFICATIONS OF DATA IN PSADA?



PUBLIC USE FILES (PUFS)

Available to anyone who agrees to comply with a set of simple conditions that determine what can be done with the data (e.g., cannot be sold). This kind of data are made easily available and accessible because the risk of identifying individual respondents is considered minimal.



LICENSED FILES OR RESEARCH FILES

This data is only available to users who have access authorization after submitting a documented application and signing an agreement governing the use of data. While it is usually anonymized to minimize the risk of identifying individuals, it may contain data, that may potentially identify individuals when linked with other data files.



DATA ENCLAVE

Data contained in the Data Enclave may be accessed and offered to users with strict conditions. These files are particularly sensitive and allow direct and/or indirect identification of respondents as they contain highly confidential information. Output files generated from accessing these files are scrutinized, reviewed, and approved by designated Data Enclave Review Panel.

WHAT PSA DATA AND INFORMATION ARE AVAILABLE IN PSADA?

- Overview and series of information
- Questionnaire Forms
- Scope and coverage of statistical activity
- Sampling procedure and design
- Technical notes
- Manuals on data collection and processing
- Metadata and details about items to be collected from the survey
- Contact information of PSA offices in charge of statistical surveys, censuses, and administrative-based statistics
- Access to microdata



THE PSADA BOASTS NEW FEATURES FOR EASIER AND FASTER ACCESSING AND SEARCHING OF DATA.



BROWSE CATALOG

Offers an easy and faster browsing experience of available collections in a catalog.



QUERY

Allows the users to download a subset of the microdata instead of the whole microdata.



DATA VISUALIZATION

Connects the application to the PSA Data Marts and allows users to visualize time series of microdata, and generate dashboards, reports, and charts from the simplest to highly detailed ones.



KEYWORD SEARCH

Facilitates search for a specific surveys or censuses using only keywords (e.g., LFS).



DOWNLOADABLE MICRODATA

The major feature of the system; allows users to download microdata directly through a link.



BROWSING METADATA

Provides detailed metadata relating to surveys, censuses, or administrative-based statistics. It makes available to users, materials like questionnaires, interviewer's manuals, reports, etc



HELP DESK

Provides help instructions to users when accessing the site.

Data Enclave



DATA ENCLAVE

Philippine Statistics Authority



How to Request Access to PSA Data Enclave?

1. Download and accomplish the Data Enclave Access Agreement form (DEAA) through this link:
<https://tinyurl.com/DEAACentralOffice>
2. Send an official letter and attach the signed DEAA either through email (attach the scanned copy of the letter and DEAA) or snail mail.

- For access to DE in PSA Central Office, it must be addressed to:

CLAIRE DENNIS S. MAPA, Ph.D.
National Statistician and Civil Registrar General
8/F CRS Building, PSA Complex
East Avenue, Diliman, Quezon City, 1101

Email: ons.staff@psa.gov.ph

- For access to DE in one of the Regional Statistical Service Offices (RSSO), address the letter to the Regional Director of the RSSO. Visit the link <https://psa.gov.ph/directory/national-capital-region> to view the directory of the RSSOs.

1. The Data Enclave Manager will respond to you within a day or two.

DATA ENCLAVE

Philippine Statistics Authority

- Equipped with devices not linked to the internet or external network.
- No information can be downloaded via USB ports, CD/DVD, or other drives.
- Required to complete an application form justifying the need for the data to fulfill specific research.
- Output generated must be scrutinized by way of a full disclosure review.



STATISTICAL SOFTWARE AND APPLICATIONS INSTALLED

Statistical and Database Software



Stata 17



R Studio



HeidiSQL

Geographical Software



QGIS



SAGA GIS

Productivity Software



Microsoft Office



Adobe Acrobat

RULES ON THE USE OF DATA ENCLAVE



The Data Enclave Manager (DEM) shall be present for the entire time of the data user/researcher's visit and use of the enclave. All materials brought into the data enclave will be inspected and only those approved will be allowed in the workstation. A locket cabinet is available at the facility and data users/researchers may leave their belongings and will be given a key tag



Data users/researchers cannot bring laptops, mobile phones, or other electronic devices into the data enclave facility. If the data user/researcher needs to copy files from the data enclaves, the DEM can possibly provide do-files, a list of variables, and results of statistical runs



All outputs, notes, and other materials generated from the facility shall be submitted for disclosure review.



The DEM in coordination with the Task Force on Data Enclave shall conduct the disclosure review of all files that the researcher wants to acquire or use.



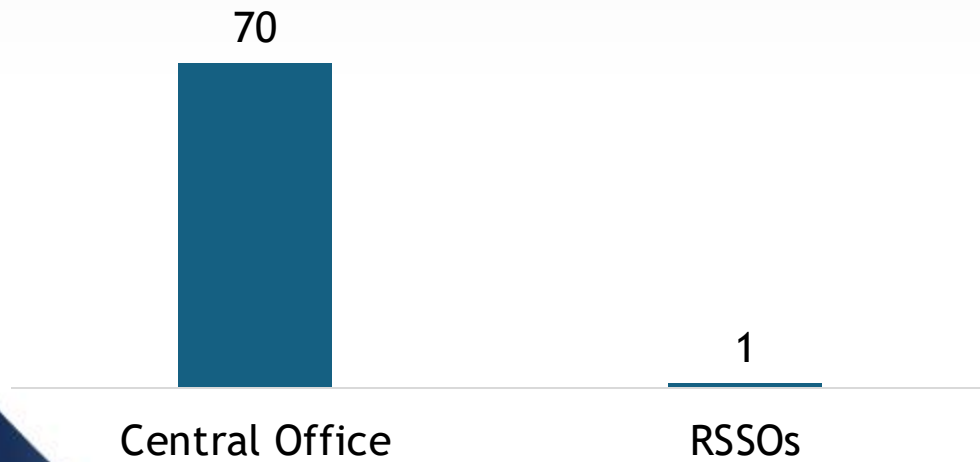
Approved outputs will be sent to the data user/researcher via email.



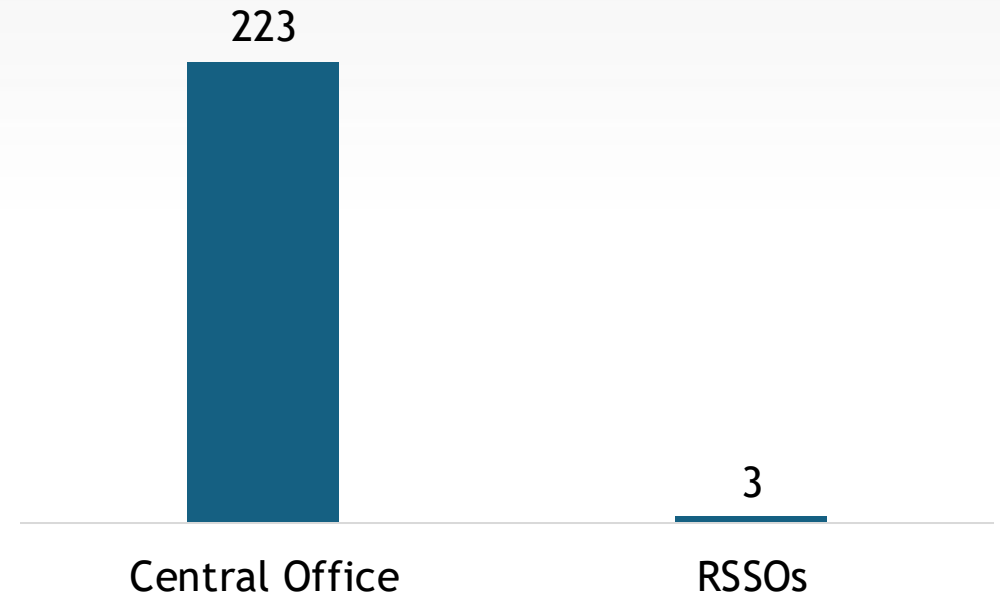
@PSAgovph
www.psa.gov.ph



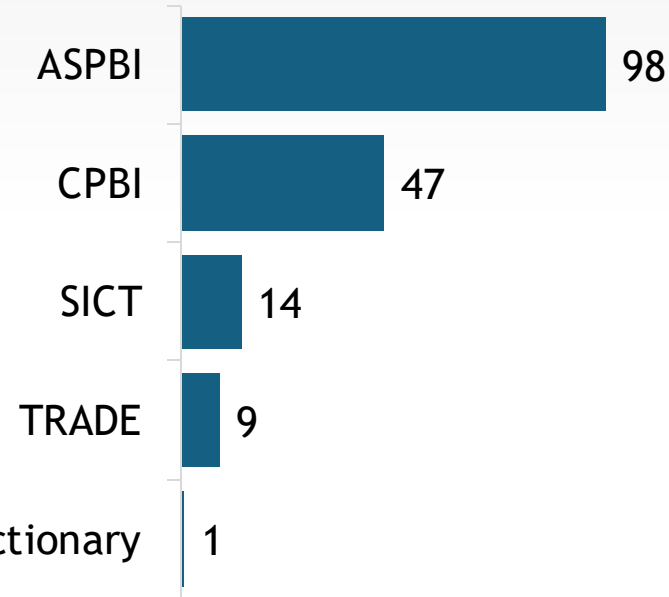
Researchers/Data Users in Data Enclave Centers (January to December 2023)



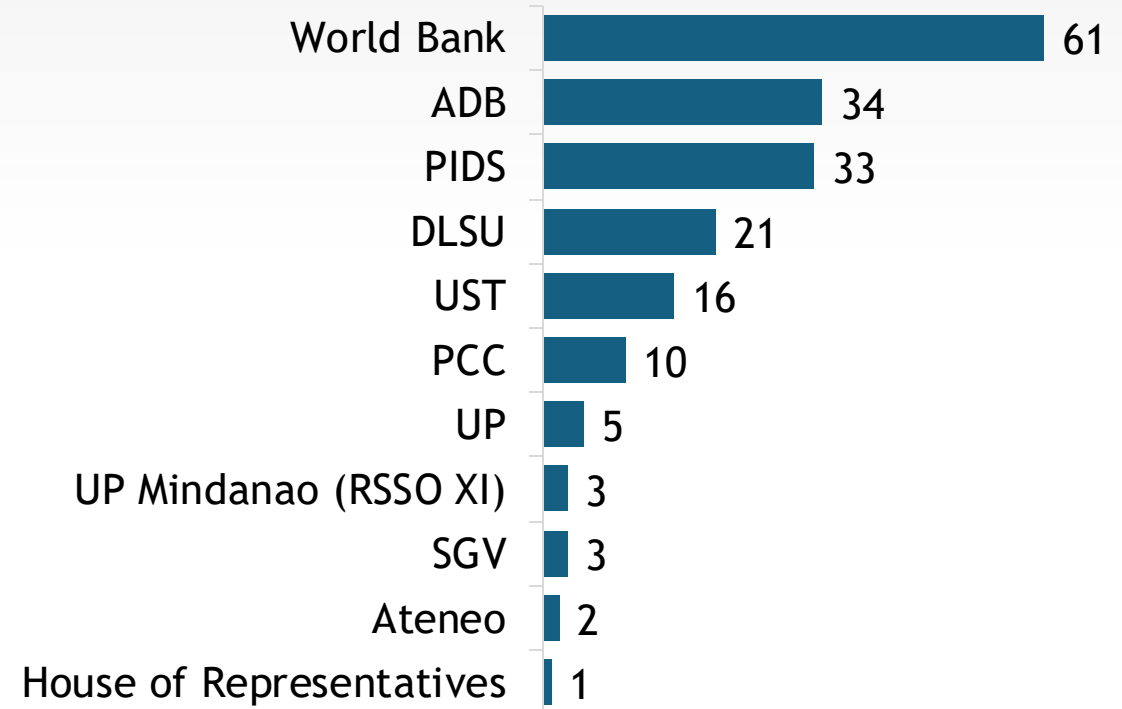
Visits in Data Enclave Centers (January to December 2023)



Requested Datasets in the Data Enclave Centers (January to December 2023)



Visits in Data Enclave Centers by Affiliation (January to December 2023)





Thank you

psa.gov.ph

openstat.psa.gov.ph

[@PSAgovph](https://www.instagram.com/PSAgovph)

