



PRESS RELEASE

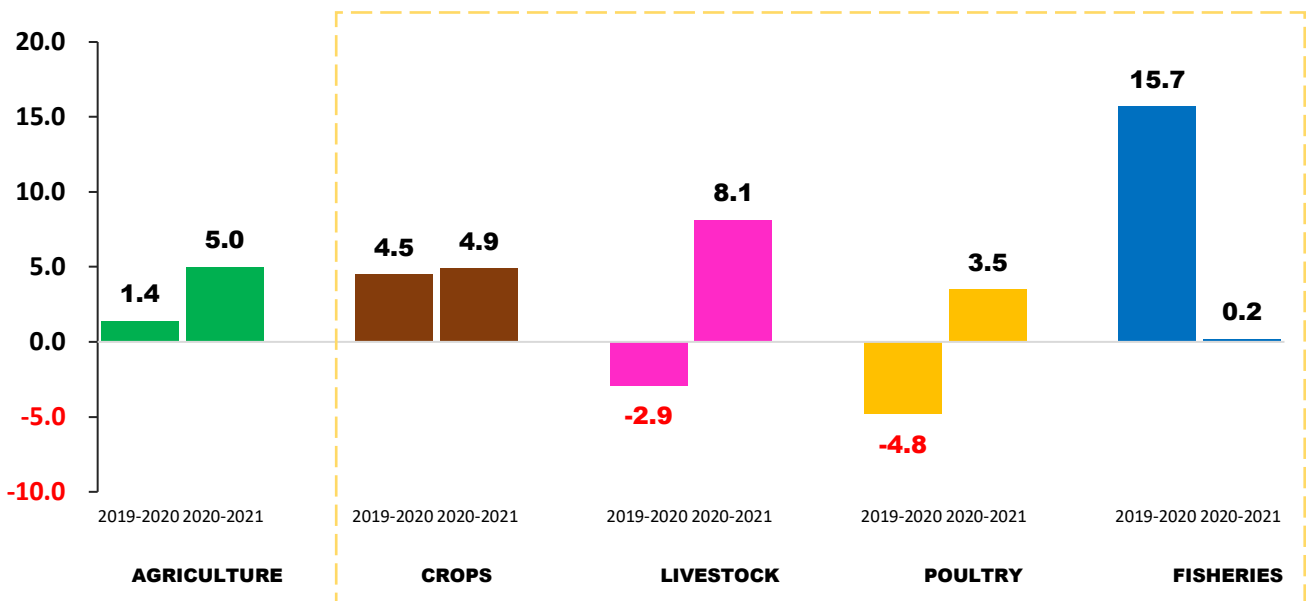
2021 Performance of Agriculture & Fisheries in Central Visayas

Date of Release: 28 June 2022
Reference No.: 2022-SR07-013

Agriculture & Fisheries in Central Visayas grew by 5.0 percent

In 2021, Agriculture & Fisheries in Central Visayas grew by 5.0 percent from 1.4 percent in 2020. Among the subsectors in 2021, Livestock posted the highest growth rate of 8.1 percent followed by Crops with 4.9 percent. Fisheries had the lowest growth rate with 0.2 percent. (Figure 1)

Figure 1 Growth Rates of Agriculture & Fisheries and its Subsector, Central Visayas, 2019 to 2021 At Constant 2018 Prices, in Percent



Source: Philippine Statistics Authority

Value of Production and Growth Rate of Agriculture and Fisheries by subsector

Crops production valued at 28.08 billion pesos in 2021. This is a 4.9 percent increase from the 26.77 billion pesos in 2020. The value of crops production increased by 4.5 percent from 2019 to 2020. (Table 1 & 2)





PRESS RELEASE

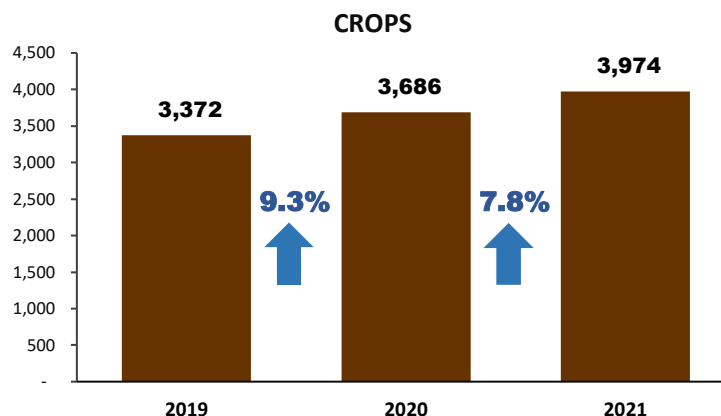
In 2021, Livestock Production valued at 28.48 billion Pesos or 8.1 percent increased from 26.34 billion pesos in 2020. Meanwhile, poultry production valued at 16.99 billion pesos. This is a 3.5 percent increase from the 16.41 billion pesos in 2020. (Table 1 & 2)

In 2021, fisheries production was valued at 12.10 billion pesos. This is an increase of 0.2 percent from the 12.08 billion pesos in 2020. (Table 1 & 2)

Volume of Production and Growth Rate of Agriculture and Fisheries by subsector

In 2021, the volume of crop production was recorded at 3,974 thousand metric tons, a 7.8 percent increase from the 3,686 thousand metric tons in 2020. Comparing the growth rates, the volume of crop production in Central Visayas had a slower growth of 7.8 percent in 2020-2021 as compared to the 9.3 percent growth rate in 2019-2020. (Figure 2)

Figure 2: Volume of Crop Production and Growth Rate, Central Visayas, 2019-2021
In Thousand Metric Ton & in Percent



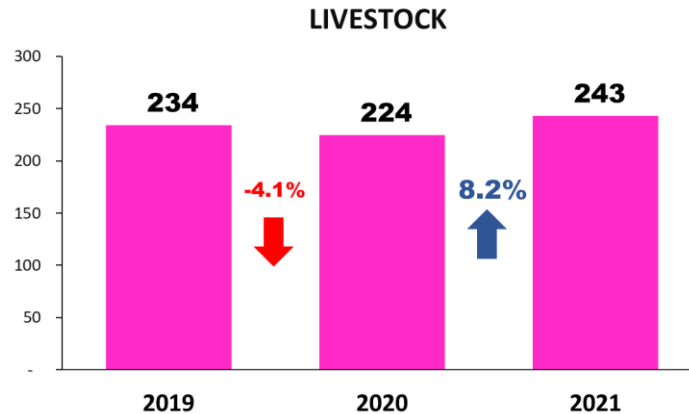
Source: Philippine Statistics Authority

For Livestock, Central Visayas in 2021 posted an 8.2 percent growth rate or 243 thousand metric tons compared to the 224 thousand metric tons in 2020. This is a rebound from a negative 4.1 percent growth in 2020 (Figure 3).



PRESS RELEASE

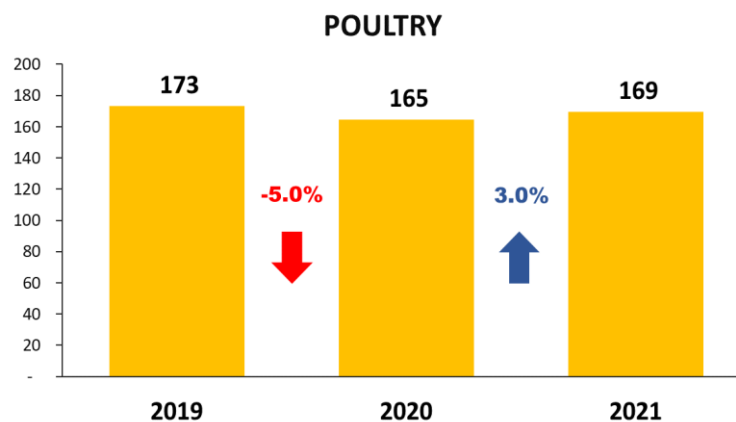
**Figure 3: Volume of Livestock Production and Growth Rate, Central Visayas, 2019-2021
In Thousand Metric Tones & in Percent**



Source: Philippine Statistics Authority

Meanwhile, the volume of poultry production in 2021 recorded at 169 thousand metric tons or about 4 thousand metric tons increased from 165 thousand metric tons in 2020. This is about 3.0 percent growth rate in 2021 which is a rebound from -5.0 percent in 2020.

**Figure 4: Volume of Poultry Production and Growth Rate, Central Visayas, 2019-2021
In Thousand Metric Tones & in Percent**



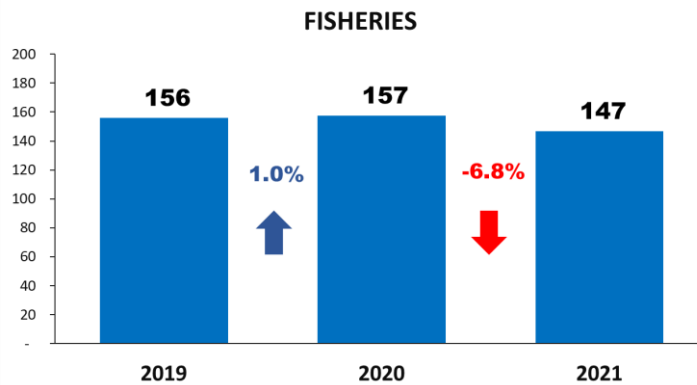
Source: Philippine Statistics Authority



PRESS RELEASE

For fisheries, the volume of production in 2021 was recorded at 147 thousand metric tons, a decreased of about 10 thousand metric tons from 157 thousand metric tons in 2020.

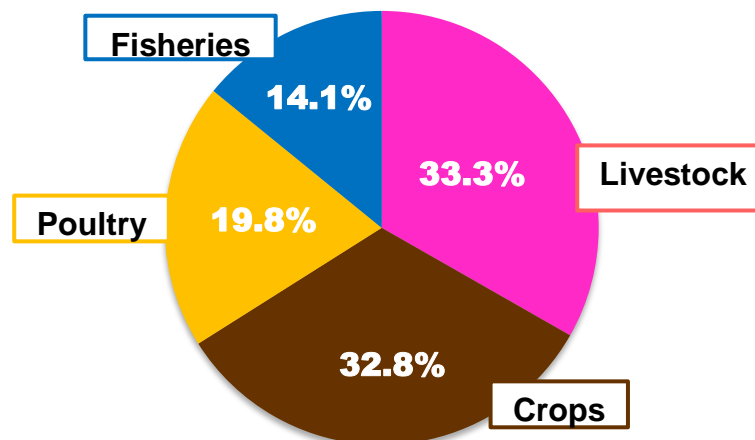
**Figure 5: Volume of Production and Growth Rate, Central Visayas, 2019-2021
In Thousand Metric Tons & in Percent**



Source: Philippine Statistics Authority

Of the total Agriculture & Fisheries in Central Visayas, Livestock had the highest share of 33.3 percent. This is followed by Crops with 32.8 percent share, Poultry with 19.8 percent share and Fisheries with 14.1 percent share.

**Figure 6: Share of Subsector to Total Agriculture, Central Visayas, 2021
At Constant 2018 Prices, in Percent**



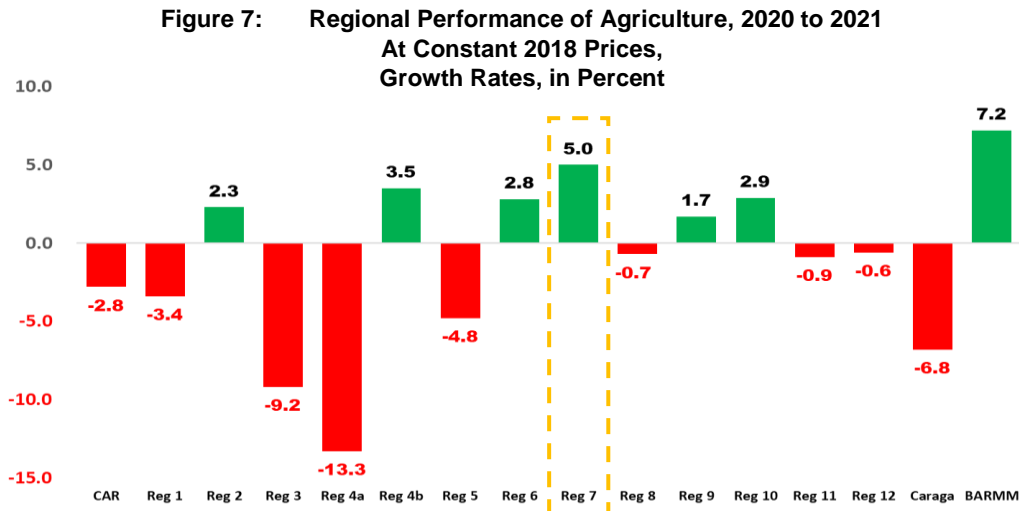
Source: Philippine Statistics Authority





PRESS RELEASE

Among regions with positive growth, Central Visayas ranked second with 5.0 percent growth rate behind BARMM which tops among all region with 7.2 percent. Region 4A or CALABARZON had the highest contraction of -13.3 percent.



Source: Philippine Statistics Authority


ARIEL E. FLORENDO
Regional Director


LPA/CDM/JDA



2nd Floor Gaisano Capital South Bldg., Colon St., Cebu City, Cebu
Telefax: (032) 412-6794, Telephone: (032) 256-0592
Website: rso07.psa.gov.ph, email: psa07.rso@gmail.com



REPUBLIC OF THE PHILIPPINES
PHILIPPINE STATISTICS AUTHORITY
 REGIONAL STATISTICAL SERVICES OFFICE VII

PRESS RELEASE

**Table 1 Value of Production in Agriculture and Fisheries at Constant 2018
 Prices, Central Visayas, 2019 to 2021**

Subsector	In Million Pesos			Growth Rates (in percent)	
	2019	2020	2021	2019-2020	2020-2021
CROPS	25,609	26,767	28,080	4.5	4.9
Palay	4,741	5,537	6,153	16.8	11.1
Corn	1,781	2,152	1,810	20.8	-15.9
Mango	4,618	4,273	4,465	-7.5	4.5
Sugarcane	3,766	4,288	4,719	13.9	10.0
Coconut	3,297	3,032	3,226	-8.0	6.4
Banana	2,832	2,997	3,156	5.8	5.3
Sweet Potato	620	673	676	8.4	0.5
Cassava	262	249	241	-5.0	-3.5
Eggplant	264	259	269	-1.8	4.0
Cabbage	228	225	225	-1.5	0.2
Ampalaya fruit	174	153	154	-12.1	0.7
Tomato	129	122	119	-5.4	-2.4
Carrots	127	112	121	-11.7	7.5
Squash Fruit	114	117	119	2.0	2.2
Ubi	135	136	135	0.4	-0.6
Pechay, Chinese	86	85	87	-2.0	2.9
Papaya	70	68	71	-2.9	4.3
Stringbeans	85	83	88	-2.4	6.5
Mongo	25	22	27	-10.3	22.9
Cacao	13	12	12	-2.6	-3.9
Okra	45	48	47	5.9	-2.3
Coffee	10	7	6	-31.9	-7.1
Other Crops	2,185	2,117	2,152	-3.1	1.6
LIVESTOCK	27,140	26,340	28,479	-2.9	8.1
Hog	23,234	23,247	25,162	0.1	8.2
Cattle	2,096	1,511	1,519	-27.9	0.6
Carabao	578	355	467	-38.6	31.5
Goat	1,233	1,227	1,332	-0.5	8.6
POULTRY	17,237	16,410	16,987	-4.8	3.5
Chicken	11,549	10,583	9,673	-8.4	-8.6
Duck	36	41	41	11.8	1.0
Chicken Eggs	5,619	5,756	7,243	2.4	25.8
Duck Eggs	33	30	30	-7.5	-1.1
FISHERIES	10,446	12,081	12,100	15.7	0.2
Big-eyed scad (Matangbaka)	939	1,062	1,147	13.1	8.0
Roundscad (Galunggong)	594	497	557	-16.3	12.1



2nd Floor Gaisano Capital South Bldg., Colon St., Cebu City, Cebu
 Telefax: (032) 412-6794, Telephone: (032) 256-0592
 Website: rss007.psa.gov.ph, email: psa07.rss0@gmail.com



REPUBLIC OF THE PHILIPPINES
PHILIPPINE STATISTICS AUTHORITY
 REGIONAL STATISTICAL SERVICES OFFICE VII

PRESS RELEASE

Frigate tuna (Tulingan)	429	491	470	14.4	-4.3
Indian mackerel (Alumahan)	299	329	270	10.2	-18.0
Flying fish (Bolador)	142	166	128	17.2	-22.6
Anchovies (Dilis)	202	198	117	-1.8	-41.1
Yellowfin tuna (Tambakol/Bariles)	157	274	225	75.2	-18.2
Eastern little tuna (Bonito)	150	195	174	30.4	-10.6
Milkfish	537	719	875	33.9	21.8
Siganid (Samaral)	510	539	470	5.7	-12.8
Seaweed	368	278	240	-24.6	-13.7
Blue crab (Alimasag)	176	189	299	7.3	58.0
Tiger Prawn	99	59	88	-41.0	50.3
Grouper (Lapu-lapu)	289	361	409	24.9	13.4
Indo-pacific mackerel (Hasa-hasa)	100	146	136	46.0	-6.8
Squid (Pusit)	428	484	624	13.2	28.9
Threadfin bream (Bisugo)	187	283	227	51.2	-19.7
Parrot fish (Loro)	209	297	225	41.7	-24.2
Bali Sardinella (Tamban)	131	247	104	88.6	-57.7
P. vannamei	1,187	1,259	1,392	6.1	10.5
Other Fisheries	3,314	4,008	3,923	20.9	-2.1
AGRICULTURE AND FISHERIES	80,431	81,597	85,647	1.4	5.0

**Table 2 Value of Production in Agriculture and Fisheries at Current Prices,
 Central Visayas, 2019 to 2021**

Subsector	In Million Pesos			Growth Rates (in percent)	
	2019	2020	2021	2019-2020	2020-2021
CROPS	23,576	25,445	28,126	7.9	10.5
Palay	4,318	4,884	5,043	13.1	3.3
Corn	1,444	1,673	1,495	15.9	-10.7
Mango	3,955	4,139	4,767	4.7	15.2
Sugarcane	3,874	4,067	4,784	5.0	17.6
Coconut	2,264	2,215	2,915	-2.2	31.6
Banana	2,968	3,779	3,883	27.3	2.8
Sweet Potato	593	574	740	-3.3	29.0
Cassava	285	298	348	4.6	17.0
Eggplant	298	299	370	0.5	23.5
Cabbage	215	182	263	-15.4	45.0
Ampalaya fruit	172	156	183	-9.4	17.2
Tomato	142	165	177	16.6	7.0
Carrots	126	118	131	-6.6	10.6
Squash Fruit	110	110	151	0.7	37.0
Ubi	153	186	134	21.3	-27.7
Pechay, Chinese	95	71	77	-25.2	7.9
Papaya	89	75	89	-15.1	17.8
Stringbeans	86	79	113	-8.4	43.3



Management System
 ISO 9001:2015
 www.tuv.com
 ID: 9108640991



2nd Floor Gaisano Capital South Bldg., Colon St., Cebu City, Cebu
 Telefax: (032) 412-6794, Telephone: (032) 256-0592
 Website: rso07.psa.gov.ph, email: psa07.rso@gmail.com



REPUBLIC OF THE PHILIPPINES
PHILIPPINE STATISTICS AUTHORITY
 REGIONAL STATISTICAL SERVICES OFFICE VII

PRESS RELEASE

Mongo	28	25	36	-8.7	43.1
Cacao	12	14	12	14.8	-13.7
Okra	45	44	52	-2.9	19.0
Coffee	10	7	6	-31.6	-19.6
Other Crops	2,294	2,285	2,357	-0.4	3.2
LIVESTOCK	26,453	24,902	33,227	-5.9	33.4
Hog	22,231	21,281	28,949	-4.3	36.0
Cattle	2,222	1,894	2,007	-14.7	5.9
Carabao	647	409	652	-36.8	59.4
Goat	1,354	1,318	1,620	-2.6	22.9
POULTRY	16,147	15,958	18,784	-1.2	17.7
Chicken	10,944	9,977	11,156	-8.8	11.8
Duck	41	50	60	20.1	21.7
Chicken Eggs	5,127	5,898	7,534	15.0	27.7
Duck Eggs	34	33	34	-2.0	2.8
FISHERIES	11,440	13,380	14,772	17.0	10.4
Big-eyed scad (Matangbaka)	1,005	1,209	1,398	20.3	15.6
Roundscad (Galunggong)	642	503	710	-21.7	41.2
Frigate tuna (Tulingan)	516	609	597	18.0	-2.1
Indian mackerel (Alumahan)	358	376	330	4.9	-12.2
Flying fish (Bolador)	158	180	156	14.2	-13.2
Anchovies (Dilis)	196	227	162	15.4	-28.5
Yellowfin tuna (Tambakol/Bariles)	163	281	245	72.6	-12.9
Eastern little tuna (Bonito)	161	242	254	50.3	4.7
Milkfish	529	667	902	25.9	35.4
Siganid (Samaral)	578	603	563	4.5	-6.7
Seaweed	435	240	243	-44.8	1.2
Blue crab (Alimasag)	176	176	313	0.04	77.8
Tiger Prawn	130	55	107	-57.5	93.4
Grouper (Lapu-lapu)	257	318	428	23.8	34.8
Indo-pacific mackerel (Hasa-hasa)	108	193	245	78.6	26.8
Squid (Pusit)	471	518	612	10.0	18.3
Threadfin bream (Bisugo)	200	306	281	52.6	-8.0
Parrot fish (Loro)	244	326	291	33.5	-10.7
Bali Sardinella (Tamban)	138	241	127	75.0	-47.4
P. vannamei	1,219	1,210	1,332	-0.7	10.1
Other Fisheries	3,757	4,900	5,476	30.4	11.8
AGRICULTURE AND FISHERIES	77,616	79,684	94,909	2.7	19.1



Management System
 ISO 9001:2015
 www.tuv.com
 ID 9108640991



2nd Floor Gaisano Capital South Bldg., Colon St., Cebu City, Cebu
 Telefax: (032) 412-6794, Telephone: (032) 256-0592
 Website: rss07.psa.gov.ph, email: psa07.rss0@gmail.com



REPUBLIC OF THE PHILIPPINES
PHILIPPINE STATISTICS AUTHORITY
 REGIONAL STATISTICAL SERVICES OFFICE VII

PRESS RELEASE

**Table 3 Percent Distribution of Value of Production in Agriculture and Fisheries,
 Central Visayas, 2019 to 2021**

Subsector	At Constant Prices			At Current Prices		
	2019	2020	2021	2019	2020	2021
CROPS	31.8	32.8	32.8	30.4	31.9	29.6
Palay	5.9	6.8	7.2	5.6	6.1	5.3
Corn	2.2	2.6	2.1	1.9	2.1	1.6
Mango	5.7	5.2	5.2	5.1	5.2	5.0
Sugarcane	4.7	5.3	5.5	5.0	5.1	5.0
Coconut	4.1	3.7	3.8	2.9	2.8	3.1
Banana	3.5	3.7	3.7	3.8	4.7	4.1
Sweet Potato	0.8	0.8	0.8	0.8	0.7	0.8
Cassava	0.3	0.3	0.3	0.4	0.4	0.4
Eggplant	0.3	0.3	0.3	0.4	0.4	0.4
Cabbage	0.3	0.3	0.3	0.3	0.2	0.3
Ampalaya fruit	0.2	0.2	0.2	0.2	0.2	0.2
Tomato	0.2	0.1	0.1	0.2	0.2	0.2
Carrots	0.2	0.1	0.1	0.2	0.1	0.1
Squash Fruit	0.1	0.1	0.1	0.1	0.1	0.2
Ubi	0.2	0.2	0.2	0.2	0.2	0.1
Pechay, Chinese	0.1	0.1	0.1	0.1	0.1	0.1
Papaya	0.1	0.1	0.1	0.1	0.1	0.1
Stringbeans	0.1	0.1	0.1	0.1	0.1	0.1
Mongo	0.03	0.03	0.03	0.04	0.03	0.04
Cacao	0.02	0.02	0.01	0.02	0.02	0.01
Okra	0.1	0.1	0.1	0.1	0.1	0.1
Coffee	0.01	0.01	0.01	0.01	0.01	0.01
Other Crops	2.7	2.6	2.5	3.0	2.9	2.5
LIVESTOCK	33.7	32.3	33.3	34.1	31.3	35.0
Hog	28.9	28.5	29.4	28.6	26.7	30.5
Cattle	2.6	1.9	1.8	2.9	2.4	2.1
Carabao	0.7	0.4	0.5	0.8	0.5	0.7
Goat	1.5	1.5	1.6	1.7	1.7	1.7
POULTRY	21.4	20.1	19.8	20.8	20.0	19.8
Chicken	14.4	13.0	11.3	14.1	12.5	11.8
Duck	0.05	0.05	0.05	0.1	0.1	0.1
Chicken Eggs	7.0	7.1	8.5	6.6	7.4	7.9
Duck Eggs	0.04	0.04	0.03	0.04	0.04	0.04
FISHERIES	13.0	14.8	14.1	14.7	16.8	15.6
Big-eyed scad (Matangbaka)	1.2	1.3	1.3	1.3	1.5	1.5
Roundscad (Galunggong)	0.7	0.6	0.7	0.8	0.6	0.7



2nd Floor Gaisano Capital South Bldg., Colon St., Cebu City, Cebu
 Telefax: (032) 412-6794, Telephone: (032) 256-0592
 Website: rso07.psa.gov.ph, email: psa07.rso@gmail.com



REPUBLIC OF THE PHILIPPINES
PHILIPPINE STATISTICS AUTHORITY
 REGIONAL STATISTICAL SERVICES OFFICE VII

PRESS RELEASE

Frigate tuna (Tulingan)	0.5	0.6	0.5	0.7	0.8	0.6
Indian mackerel (Alumahan)	0.4	0.4	0.3	0.5	0.5	0.3
Flying fish (Bolador)	0.2	0.2	0.1	0.2	0.2	0.2
Anchovies (Dilis)	0.3	0.2	0.1	0.3	0.3	0.2
Yellowfin tuna (Tambakol/Bariles)	0.2	0.3	0.3	0.2	0.4	0.3
Eastern little tuna (Bonito)	0.2	0.2	0.2	0.2	0.3	0.3
Milkfish	0.7	0.9	1.0	0.7	0.8	1.0
Siganid (Samaral)	0.6	0.7	0.5	0.7	0.8	0.6
Seaweed	0.5	0.3	0.3	0.6	0.3	0.3
Blue crab (Alimasag)	0.2	0.2	0.3	0.2	0.2	0.3
Tiger Prawn	0.1	0.1	0.1	0.2	0.1	0.1
Grouper (Lapu-lapu)	0.4	0.4	0.5	0.3	0.4	0.5
Indo-pacific mackerel (Hasa-hasa)	0.1	0.2	0.2	0.1	0.2	0.3
Squid (Pusit)	0.5	0.6	0.7	0.6	0.6	0.6
Threadfin bream (Bisugo)	0.2	0.3	0.3	0.3	0.4	0.3
Parrot fish (Loro)	0.3	0.4	0.3	0.3	0.4	0.3
Bali Sardinella (Tamban)	0.2	0.3	0.1	0.2	0.3	0.1
P. vannamei	1.5	1.5	1.6	1.6	1.5	1.4
Other Fisheries	4.1	4.9	4.6	4.8	6.1	5.8
AGRICULTURE AND FISHERIES	100.0	100.0	100.0	100.0	100.0	100.0

**Table 4 Volume of Production in Agriculture and Fisheries,
 Central Visayas, 2019 to 2021**

Subsector	In Thousand Metric Tons			Growth Rates (in percent)	
	2019	2020	2021	2019-2020	2020-2021
CROPS	3,372.16	3,686.47	3,974.26		
Palay	223.09	260.52	289.50	16.8	11.1
Corn	105.58	127.60	107.31	20.8	-15.9
Mango	80.15	74.16	77.50	-7.5	4.5
Sugarcane	2,081.97	2,370.85	2,609.08	13.9	10.0
Coconut	422.51	388.54	413.45	-8.0	6.4
Banana	195.78	207.18	218.21	5.8	5.3
Sweet Potato	30.15	32.69	32.85	8.4	0.5
Cassava	51.09	48.55	46.84	-5.0	-3.5
Eggplant	8.32	8.17	8.49	-1.8	4.0
Cabbage	8.18	8.06	8.07	-1.5	0.2
Ampalaya fruit	3.79	3.34	3.36	-12.1	0.7
Tomato	4.94	4.67	4.56	-5.4	-2.4
Carrots	2.76	2.44	2.62	-11.7	7.5
Squash Fruit	7.01	7.15	7.30	2.0	2.2
Ubi	5.28	5.30	5.27	0.4	-0.6
Pechay, Chinese	3.54	3.47	3.57	-2.0	2.9



Management System
 ISO 9001:2015
 www.tuv.com
 ID 9108640991



2nd Floor Gaisano Capital South Bldg., Colon St., Cebu City, Cebu
 Telefax: (032) 412-6794, Telephone: (032) 256-0592
 Website: rso07.psa.gov.ph, email: psa07.rso@gmail.com



REPUBLIC OF THE PHILIPPINES

PHILIPPINE STATISTICS AUTHORITY
REGIONAL STATISTICAL SERVICES OFFICE VII

PRESS RELEASE

Papaya	5.85	5.68	5.92	-2.9	4.3
Stringbeans	2.74	2.67	2.85	-2.4	6.5
Mongo	0.46	0.41	0.51	-10.3	22.9
Cacao	0.11	0.10	0.10	-2.6	-3.9
Okra	1.42	1.50	1.47	5.9	-2.3
Coffee	0.18	0.12	0.11	-31.9	-7.1
Other Crops	127.27	123.30	125.33	-3.1	1.6
LIVESTOCK Hog					
Cattle	192.76	192.87	208.75	0.1	8.2
Carabao	23.46	16.91	17.00	-27.9	0.6
Goat	7.82	4.80	6.32	-38.6	31.5
	9.88	9.84	10.68	-0.5	8.6
POULTRY					
Chicken	118.63	108.70	99.36	-8.4	-8.6
Duck	0.29	0.33	0.33	11.8	1.0
Chicken Eggs	53.86	55.18	69.44	2.4	25.8
Duck Eggs	0.34	0.32	0.31	-7.5	-1.1
FISHERIES					
Big-eyed scad (Matangbaka)	7.55	8.54	9.22	13.1	8.0
Roundscad (Galunggong)	5.83	4.88	5.47	-16.3	12.1
Frigate tuna (Tulingan)	3.70	4.24	4.06	14.4	-4.3
Indian mackerel (Alumahan)	2.40	2.64	2.17	10.2	-18.0
Flying fish (Bolador)	1.80	2.11	1.63	17.2	-22.6
Anchovies (Dilis)	2.97	2.92	1.72	-1.8	-41.1
Yellowfin tuna (Tambakol/Bariles)	0.92	1.62	1.33	75.2	-18.2
Eastern little tuna (Bonito)	1.28	1.67	1.50	30.4	-10.6
Milkfish	4.69	6.29	7.66	33.9	21.8
Siganid (Samaral)	4.34	4.59	4.00	5.7	-12.8
Seaweed	65.25	49.20	42.46	-24.6	-13.7
Blue crab (Alimasag)	1.04	1.12	1.77	7.3	58.0
Tiger Prawn	0.29	0.17	0.26	-41.0	50.3
Grouper (Lapu-lapu)	1.25	1.56	1.77	24.9	13.4
Indo-pacific mackerel (Hasa-hasa)	1.01	1.48	1.38	46.0	-6.8
Squid (Pusit)	2.95	3.34	4.30	13.2	28.9
Threadfin bream (Bisugo)	1.37	2.06	1.66	51.2	-19.7
Parrot fish (Loro)	1.84	2.61	1.98	41.7	-24.2
Bali Sardinella (Tamban)	3.26	6.14	2.60	88.6	-57.7
P. vannamei	4.57	4.85	5.36	6.1	10.5
Other Fisheries	37.53	45.40	44.43	20.9	-2.1



Management System
ISO 9001:2015
www.tuv.com
ID 9108640991



2nd Floor Gaisano Capital South Bldg., Colon St., Cebu City, Cebu
Telefax: (032) 412-6794, Telephone: (032) 256-0592
Website: rso07.psa.gov.ph, email: psa07.rso@gmail.com



PRESS RELEASE

**Table 5 Average Farmgate Prices in Agriculture and Fisheries,
 Central Visayas, 2019 to 2021**

Subsector	In Pesos per Kilogram			Growth Rates (in percent)	
	2019	2020	2021	2019-2020	2020-2021
CROPS				3.3	5.4
Palay	19.36	18.75	17.42	-3.2	-7.1
Corn	13.68	13.11	13.93	-4.1	6.2
Mango	49.35	55.81	61.50	13.1	10.2
Sugarcane	1.86	1.72	1.83	-7.8	6.9
Coconut	5.36	5.70	7.05	6.4	23.7
Banana	15.16	18.24	17.80	20.3	-2.4
Sweet Potato	19.66	17.54	22.53	-10.8	28.4
Cassava	5.58	6.13	7.44	10.0	21.3
Eggplant	35.82	36.66	43.54	2.3	18.8
Cabbage	26.24	22.53	32.61	-14.2	44.8
Ampalaya fruit	45.40	46.79	54.46	3.1	16.4
Tomato	28.75	35.44	38.84	23.3	9.6
Carrots	45.86	48.46	49.86	5.7	2.9
Squash Fruit	15.64	15.44	20.70	-1.3	34.1
Ubi	28.97	35.01	25.46	20.9	-27.3
Pechay, Chinese	26.94	20.56	21.57	-23.7	4.9
Papaya	15.17	13.25	14.97	-12.6	13.0
Stringbeans	31.43	29.48	39.67	-6.2	34.6
Mongo	59.73	60.85	70.88	1.9	16.5
Cacao	113.60	133.93	120.29	17.9	-10.2
Okra	31.95	29.30	35.71	-8.3	21.9
Coffee	58.68	58.94	50.99	0.4	-13.5
Other Crops	18.02	18.53	18.81	2.8	1.5
LIVESTOCK				-3.0	23.4
Hog	115.33	110.34	138.67	-4.3	25.7
Cattle	94.71	112.04	118.03	18.3	5.3
Carabao	82.73	85.16	103.16	2.9	21.1
Goat	136.99	134.00	151.68	-2.2	13.2
POULTRY				3.8	13.7
Chicken	92.26	91.78	112.27	-0.5	22.3
Duck	141.76	152.21	183.41	7.4	20.5
Chicken Eggs	95.19	106.89	108.51	12.3	1.5
Duck Eggs	97.46	103.22	107.34	5.9	4.0
FISHERIES				1.1	10.2



Management System
 ISO 9001:2015
 www.tuv.com
 ID 9108640991



2nd Floor Gaisano Capital South Bldg., Colon St., Cebu City, Cebu
 Telefax: (032) 412-6794, Telephone: (032) 256-0592
 Website: rss007.psa.gov.ph, email: psa07.rss0@gmail.com



REPUBLIC OF THE PHILIPPINES
PHILIPPINE STATISTICS AUTHORITY
 REGIONAL STATISTICAL SERVICES OFFICE VII

PRESS RELEASE

Big-eyed scad (Matangbaka)	133.10	141.67	151.59	6.4	7.0
Roundscad (Galunggong)	110.11	103.11	129.89	-6.3	26.0
Frigate tuna (Tulingan)	139.37	143.77	147.11	3.2	2.3
Indian mackerel (Alumahan)	149.61	142.39	152.47	-4.8	7.1
Flying fish (Bolador)	87.71	85.45	95.88	-2.6	12.2
Anchovies (Dilis)	66.11	77.69	94.29	17.5	21.4
Yellowfin tuna (Tambakol/Bariles)	175.88	173.25	184.39	-1.5	6.4
Eastern little tuna (Bonito)	125.63	144.85	169.59	15.3	17.1
Milkfish	112.76	106.02	117.83	-6.0	11.1
Siganid (Samaral)	133.11	131.48	140.73	-1.2	7.0
Seaweed	6.67	4.89	5.73	-26.7	17.3
Blue crab (Alimasag)	168.76	157.29	176.98	-6.8	12.5
Tiger Prawn	450.64	324.41	417.55	-28.0	28.7
Grouper (Lapu-lapu)	204.90	203.08	241.46	-0.9	18.9
Indo-pacific mackerel (Hasa-hasa)	106.45	130.21	177.12	22.3	36.0
Squid (Pusit)	159.52	155.07	142.32	-2.8	-8.2
Threadfin bream (Bisugo)	146.68	148.02	169.62	0.9	14.6
Parrot fish (Loro)	132.63	124.94	147.15	-5.8	17.8
Bali Sardinella (Tamban)	42.22	39.18	48.78	-7.2	24.5
P. vannamei	266.53	249.43	248.47	-6.4	-0.4
Other Fisheries	100.09	107.95	123.25	7.8	14.2
AGRICULTURE AND FISHERIES				1.2	13.5



Management System
 ISO 9001:2015
 www.tuv.com
 ID: 9108640991



2nd Floor Gaisano Capital South Bldg., Colon St., Cebu City, Cebu
 Telefax: (032) 412-6794, Telephone: (032) 256-0592
 Website: rss007.psa.gov.ph, email: psa07.rssso@gmail.com