



SPECIAL RELEASE

SWINE SITUATION REPORT in Central Visayas July to September 2022 Preliminary Result

Date of Release: 02 February 2023

Reference No.: 2023-SR07-009

The total hog production of Central Visayas from July to September 2022 was estimated at 58.08 thousand metric tons, liveweight. This was 16.8 percent higher than the previous year’s same quarter production of 49.72 thousand metric tons. It increased annually from 10.1 percent in 2021 to 16.8 percent growth rate in 2022. (Fig. 1 & Fig. 2 and Table 1)

Figure 1. Volume of Hog Production
 (in thousand metric tons, liveweight)
 By Region: July - September 2022^P

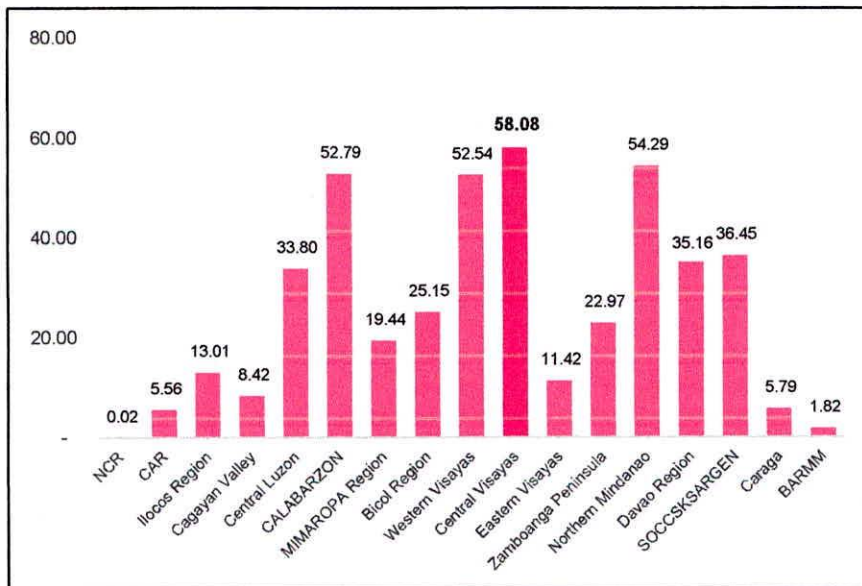
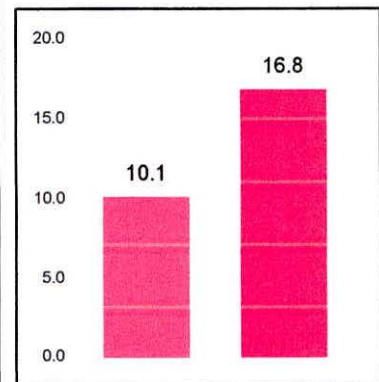


Figure 2 Growth Rate
 (in percent)

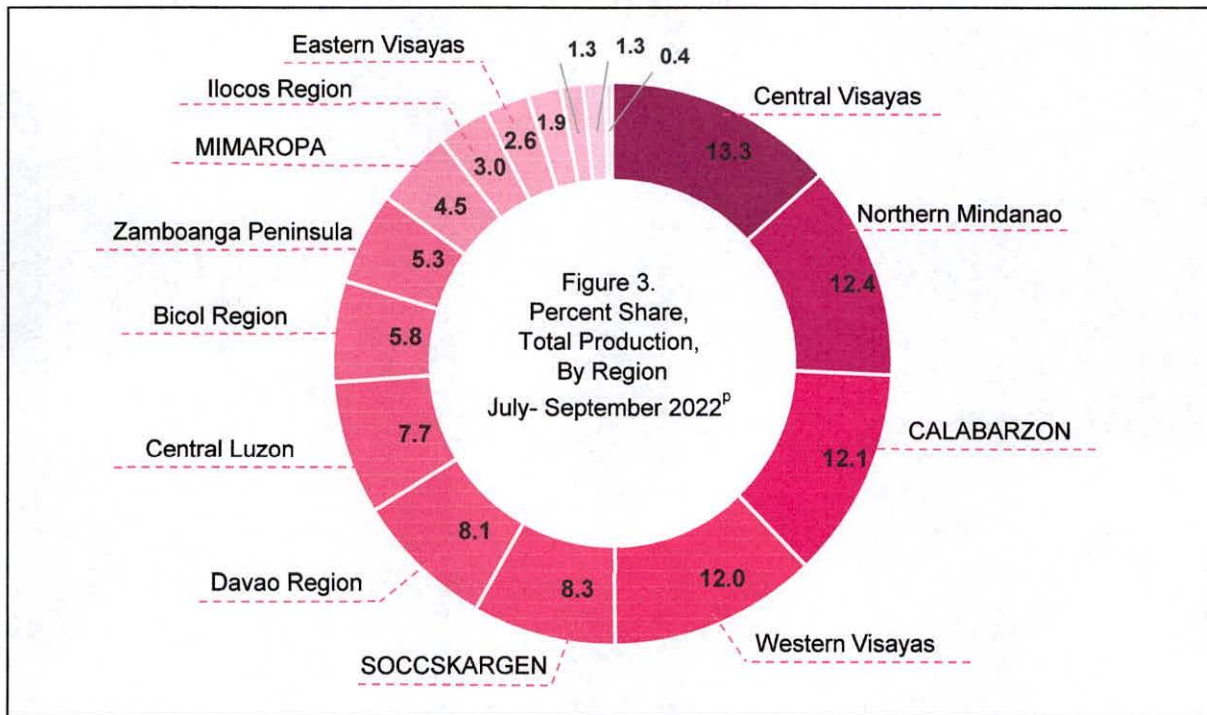


Source: Philippine Statistics Authority
 P- Preliminary

Among the regions, Central Visayas was the top producer of hogs during the quarter. This was followed by Northern Mindanao and CALABARZON with 54.29 and 52.79 thousand metric tons, liveweight, respectively. These three regions accounted for 37.8 percent of the country’s total hog production. Meanwhile, NCR accounted with the lowest hog production at 0.02 thousand metric tons, liveweight. (Figure 1 and Table 1)



SPECIAL RELEASE



Source: Philippine Statistics Authority
^P- preliminary

In terms of production, the region's percent share was the biggest among all regions at 13.3 percent to the country's total swine production. Among the major producing regions were Northern Mindanao with 12.4 percent share, CALABARZON with 12.1 percent share and Western Visayas with 12.0 percent share. (Figure 3 and Table 1)

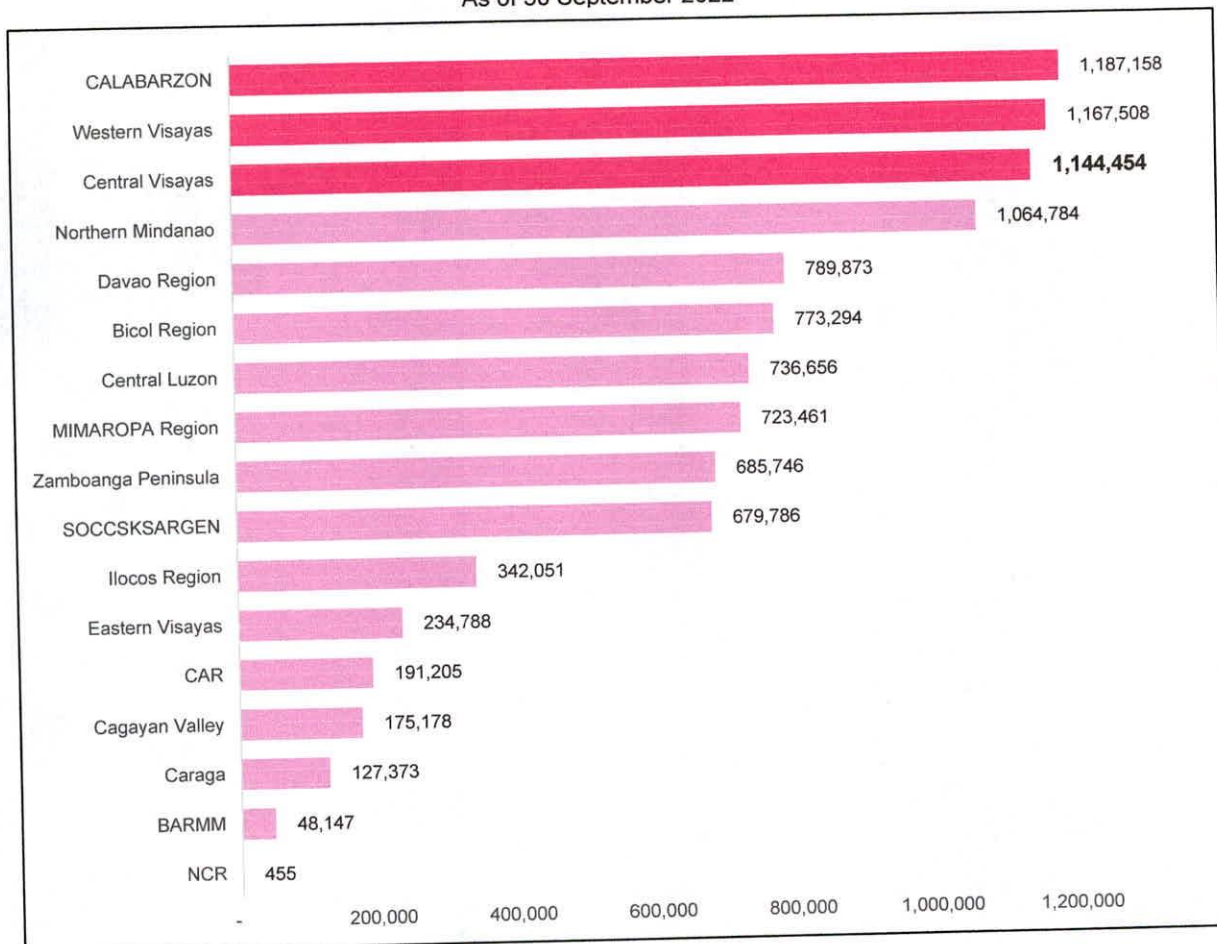
On the other hand, the bottom four regions in terms of percent shares were Cagayan Valley, Caraga, BARMM and NCR with 1.9 percent, 1.3 percent and 0.4 percent, respectively. (Fig.3 and Table 1)

Relative to their levels in the same quarter of 2021, nine regions posted increments in production during the quarter. In terms of level, Central Visayas posted the highest increase of 8.35 thousand metric tons, liveweight from 49.72 thousand metric tons, liveweight in the same quarter of the previous year to 58.08 thousand metric tons, liveweight this third quarter of 2022. (Table 1)



SPECIAL RELEASE

Figure 4. Distribution of Swine Inventory, By Region
 As of 30 September 2022^P



Source: Philippine Statistics Authority
^P- preliminary

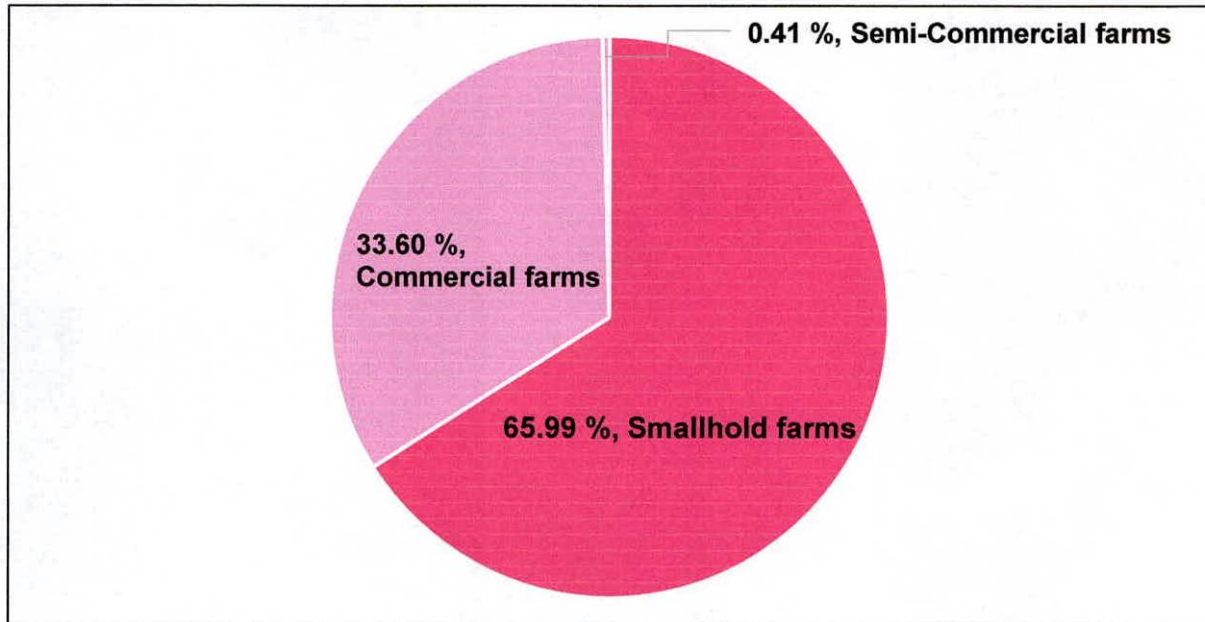
As of 30 September 2022, the region's total swine inventory was estimated at 1,144,454 heads. The region was among the top three regions recorded with highest swine population. CALABARZON accounted the highest with 1,187,158 heads, followed by Western Visayas with 1,167,508 heads. These three regions comprised 34.8 percent share of the country's total swine population. (Figure 4 and Table 2)





SPECIAL RELEASE


Figure 5. Distribution of Swine Inventory by Classification*
Central Visayas: as of 30 September 2022^P



*- Based on new classification of animals per PSA Board Resolution No. 04, series of 2022 dated 13 May 2022
P- preliminary
Source: Philippine Statistics Authority

Of the region's total swine inventory, smallhold farms accounted for 65.99 percent, while the remaining comprised the semi-commercial farms and commercial farms with corresponding shares of 0.41 percent and 33.60 percent, respectively. (Figure 5)

Prepared by:


CAYLORD D. NIALA
Senior Statistical Specialist

Approved by:


ARIEL E. FLORENDO
Regional Director


LPA/DAMCC



2nd Floor Gaisano Capital South Bldg., Colon St., Cebu City, Cebu
Mobile number: 0917-314-0415
Website: rso07.psa.gov.ph, email: rso07@psa.gov.ph

SPECIAL RELEASE

STATISTICAL TABLES

Table 1. Volume of Hog Production by Region, July-September 2022^P

Region	Production (in thousand metric tons, liveweight)			Annual Growth Rate (in percent)		Percent Share to 2022 ^P	Rank
	2020	2021	2022 ^P	2021	2022 ^P		
Philippines	508.91	418.07	436.68	-17.8	4.5	100.0	
NCR	..	0.07	0.02	..	-73.6	a/	
CAR	7.30	6.10	5.56	-16.4	-8.9	1.27	15
Ilocos Region	22.98	13.28	13.01	-42.2	-2.1	3.0	11
Cagayan Valley	18.70	9.69	8.42	-48.2	-13.1	1.9	13
Central Luzon	55.95	26.67	33.80	-52.3	26.8	7.7	7
CALABARZON	90.89	52.48	52.79	-42.3	0.6	12.1	3
MIMAROPA Region	18.84	20.37	19.44	8.1	-4.6	4.5	10
Bicol Region	29.97	23.93	25.15	-20.2	5.1	5.8	8
Western Visayas	48.22	50.93	52.54	5.6	3.2	12.0	4
Central Visayas	45.16	49.72	58.08	10.1	16.8	13.3	1
Eastern Visayas	19.45	18.19	11.42	-6.5	-37.2	2.6	12
Zamboanga Peninsula	18.87	16.56	22.97	-12.2	38.7	5.3	9
Northern Mindanao	50.10	51.78	54.29	3.3	4.8	12.4	2
Davao Region	36.65	35.07	35.16	-4.3	0.2	8.1	6
SOCCKSARGEN	34.30	34.33	36.45	0.1	6.2	8.3	5
Caraga	9.32	6.80	5.79	-27.1	-14.9	1.3	14
BARMM	2.21	2.10	1.82	-5.0	-13.4	0.4	16

^P-Preliminary

Note: Details may not add up to total due to rounding. Growth rates and percent share may yield different results when computed manually due to rounding.

Source: Philippine Statistics Authority



SPECIAL RELEASE

**Table 2. Hog Inventory by Region, Philippines
 As of 30 September 2022^P**

Region	Inventory (in number of heads)				Percent Share to 2022 ^P
	Smallhold	Semi- commercial	Commercial	Total	
Philippines	7,825,703	108,807	2,137,407	10,071,917	100.0
NCR	455	455	a/
CAR	190,179	1,026	..	191,205	1.9
Ilocos Region	280,609	25,954	35,488	342,051	3.4
Cagayan Valley	174,785	341	52	175,178	1.7
Central Luzon	317,740	23,039	395,877	736,656	7.3
CALABARZON	1,004,302	10,072	172,784	1,187,158	11.8
MIMAROPA Region	704,569	6,172	12,720	723,461	7.2
Bicol Region	762,914	4,168	6,212	773,294	7.7
Western Visayas	1,062,826	2,366	102,316	1,167,508	11.6
Central Visayas	755,253	4,703	384,498	1,144,454	11.4
Eastern Visayas	224,275	2,307	8,206	234,788	2.3
Zamboanga Peninsula	654,773	3,832	27,141	685,746	6.8
Northern Mindanao	669,311	3,637	391,836	1,064,784	10.6
Davao Region	499,070	1,316	289,487	789,873	7.8
SOCCSKSARGEN	351,932	19,255	308,599	679,786	6.7
Caraga	124,563	619	2,191	127,373	1.3
BARMM	48,147	48,147	0.5

^P-Preliminary

Note: Details may not add up to total due to rounding. Growth rates and percent share may yield different results when computed manually due to rounding.

Source: Philippine Statistics Authority





SPECIAL RELEASE

EXPLANATORY NOTES

This Swine Situation Report presents the swine industry in terms of volume of production, inventory by farm type, and average farmgate prices. This report is prepared to serve as a ready reference for the various clients and stakeholders in the agriculture sector of the Philippine Statistics Authority (PSA). It is released quarterly, that is, every February, May, August, and November.

Concepts and Definitions

Volume of production refers to the number of tended/raised hogs disposed for slaughter including animals shipped-out for slaughter. This is expressed in metric tons, liveweight.

Inventory refers to the actual number of swine present in the farm as of a specific reference date. The following are the new farm classifications and definitions based on the approved PSA Board Resolution No. 04, series of 2022:

Farm Classification	Definition*
Smallhold	Tending 20 heads of sow and below
Semi-Commercial	Tending 21-50 heads of sow
Commercial	Tending 51 and above heads of sow

*Based on Animal Unit index.

The data on inventory of swine by farm type (i.e., backyard and commercial) can still be accessed in the OpenSTAT website of PSA with the link:

https://openstat.psa.gov.ph/PXWeb/pxweb/en/DB/DB__2E__LP/0022E4FINL0.px/?rxid=bdf9d8da-96f1-4100-ae09-18cb3eaeb313_

Farmgate price refers to the price received by raisers for their produce at the location of farm. Thus, the marketing costs, such as the transport and other marketing costs (if any) incurred in selling the produce, are not included in the farmgate prices. The 2020 to 2021 farmgate prices included in this special release were sourced from the Price Statistics Division (PSD), while the 2022 farmgate prices were based on the surveys of Livestock and Poultry Statistics Division (LPSD).

