



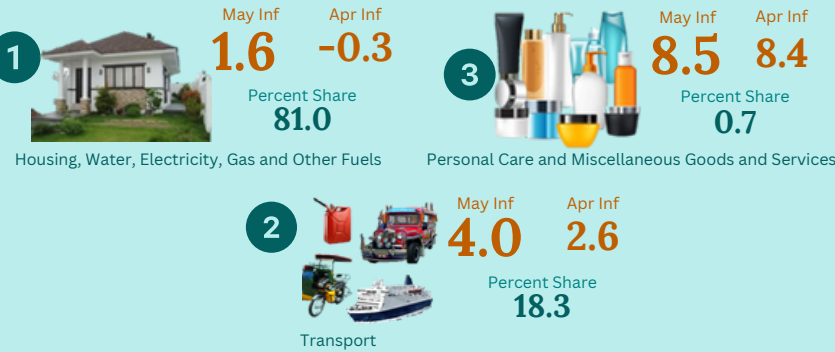
CITY OF LAPU-LAPU CONSUMER PRICE INDEX

for All Income Households

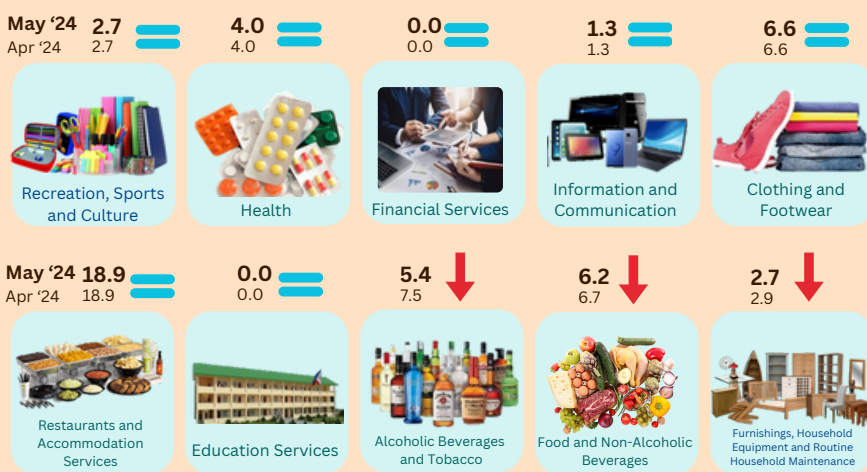
MAY 2024 (2018 = 100)



Main Drivers to the Upward Trend of Inflation

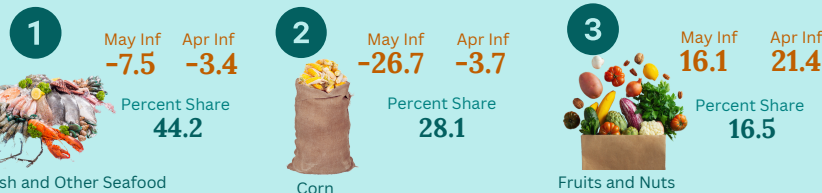


Remaining Commodity Groups Inflation Rate relative to April Inflation

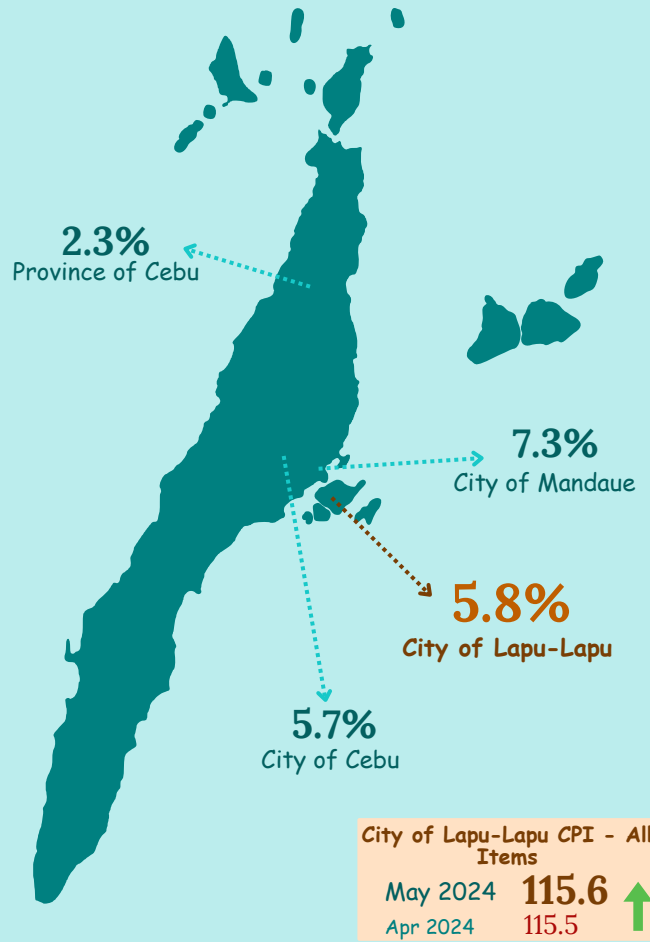


Main Driver to the Downward Trend of Inflation - Food Only

*While the overall inflation is up, Food (only) group inflation declined.



Inflation Rate Across Domains in Cebu Province



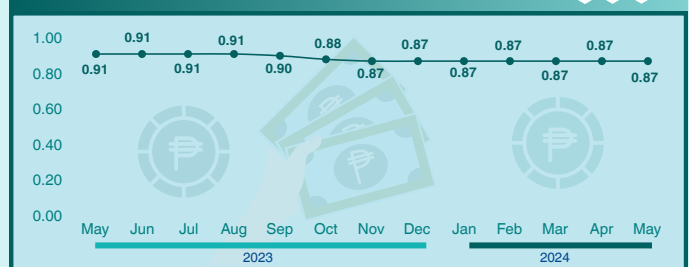
Consumer Price Index (CPI) is an indicator of the change in the average retail prices of a fixed basket of goods and services commonly purchased by households relative to a base year.

Inflation Rate from May 2023 to May 2024



Inflation Rate is the rate of change or the year-on-year change of CPI. It is interpreted in terms of declining purchasing power of peso.

Purchasing Power of Peso from May 2023 to May 2024



PPP shows how much peso in the base period is worth in the current period. It is computed as the reciprocal of the CPI for the period under review multiplied by 100.

CPI, Inflation Rates, and PPP for All Income Households in Cebu are Posted at <https://openstat.psa.gov.ph/Database/Prices/Price-Indices>