

# BOHOL PRICE INDICES

## Bottom 30% Income Households

### December 2024



# 126.7

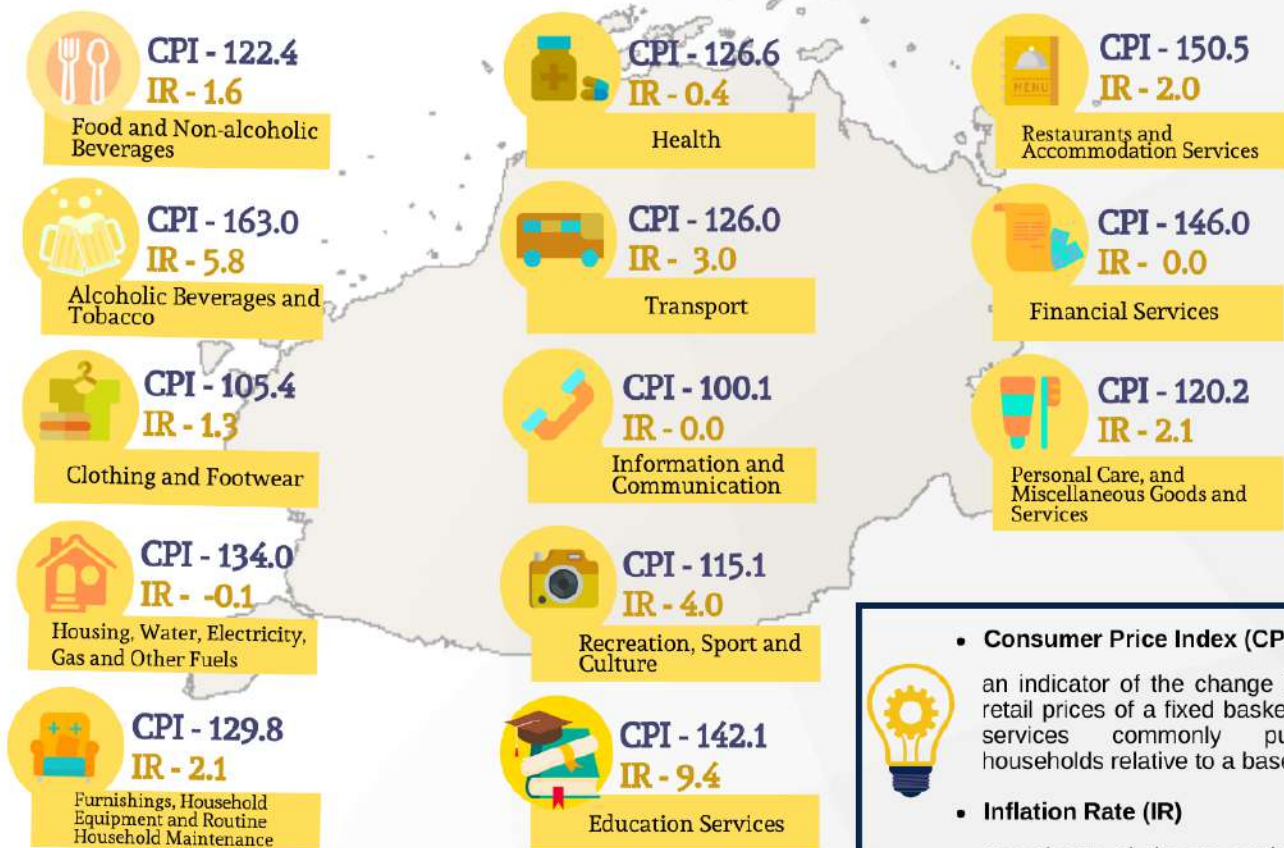
CPI for all Items  
(2018 = 100)



# 1.6

Inflation Rate  
(2023-2024)

## Consumer Price Index and Inflation Rate for the Bottom 30% Income Households by Commodity Group (2018 = 100)



### • Consumer Price Index (CPI)



an indicator of the change in the average retail prices of a fixed basket of goods and services commonly purchased by households relative to a base year

### • Inflation Rate (IR)

annual rate of change or the year-on-year change of the CPI expressed in percent

### • CPI for the Bottom 30% Income Households

an indicator of the change in the average prices of goods and services commonly purchased by consumers whose per capita income fall below the bottom 30%

- The estimated weights of 2018-based CPI for bottom 30% income households were based from the results of the 2018 Family Income and Expenditure Survey (FIES) for bottom 30% income households.

Fig. 1. Inflation Rates for the Bottom 30% Income Households: Bohol, Dec 2023 to Dec 2024

