



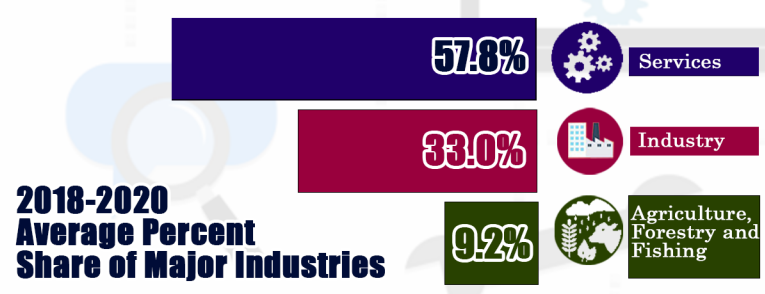
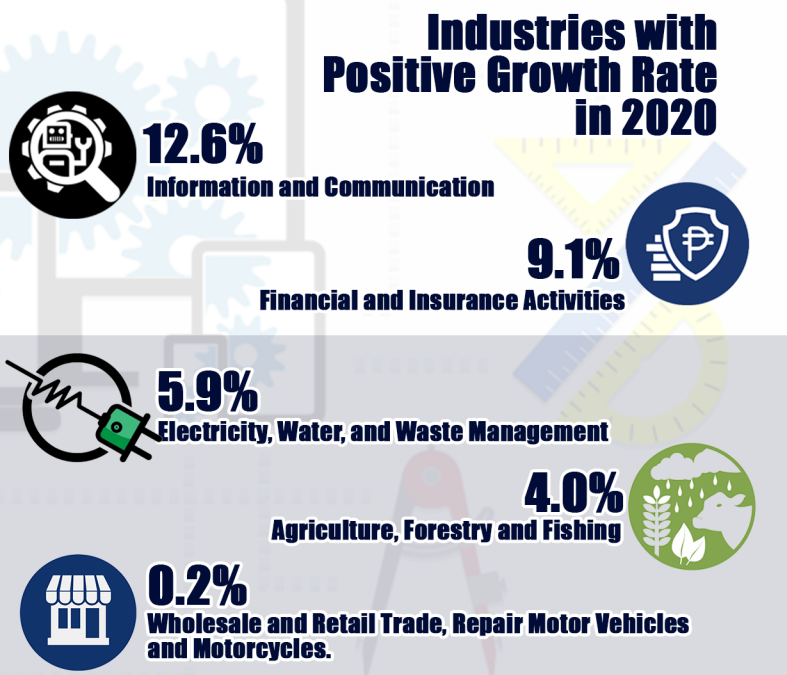
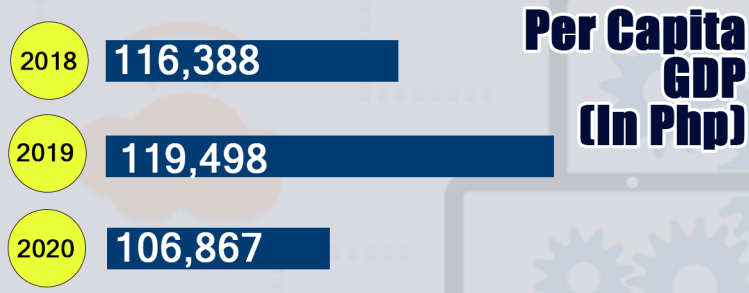
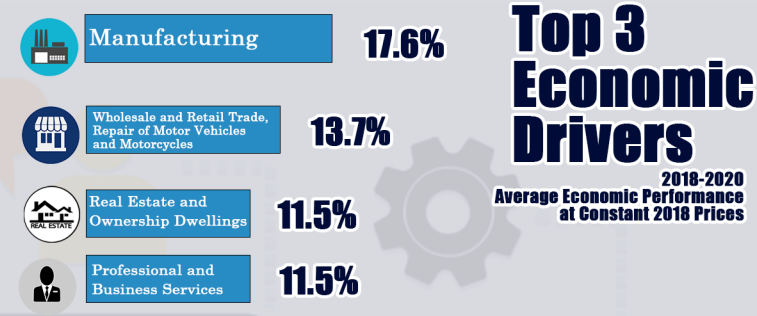
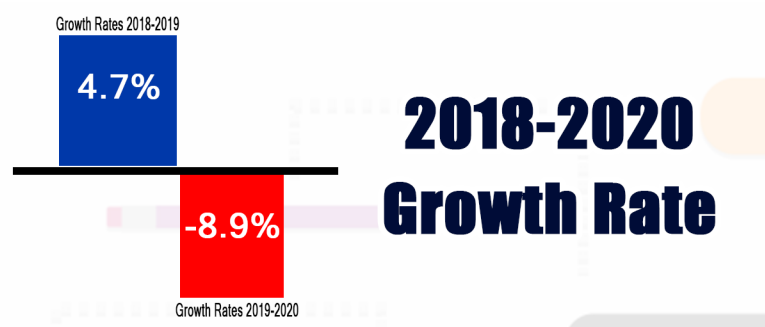
2018-2020 ECONOMIC PERFORMANCE PROVINCE OF CEBU

At Constant 2018 Prices

Excluding Highly Urbanized Cities

2018-2020
Average Percent Share
to the Total Economy of
Central Visayas Region **30.7%**

2018-2020 Average GDP
365.1 Billion



The Provincial Product Accounts (PPA) aims to present a comprehensive picture of the provincial economies by providing a more appropriate measure and assessment of a province's economic performance