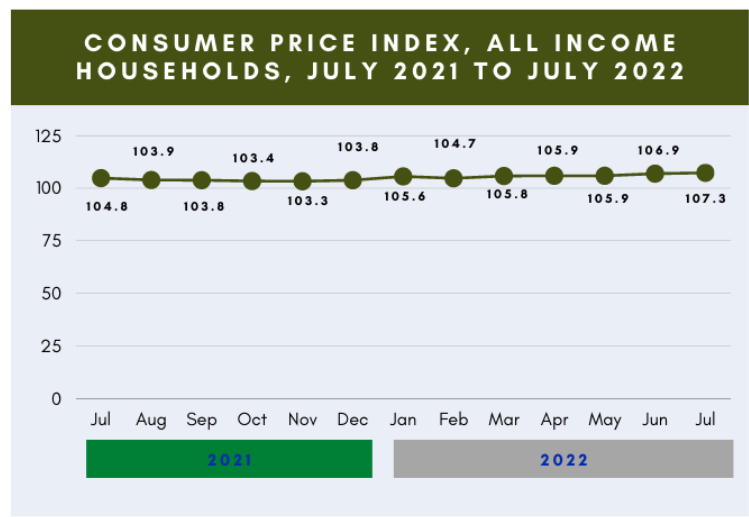
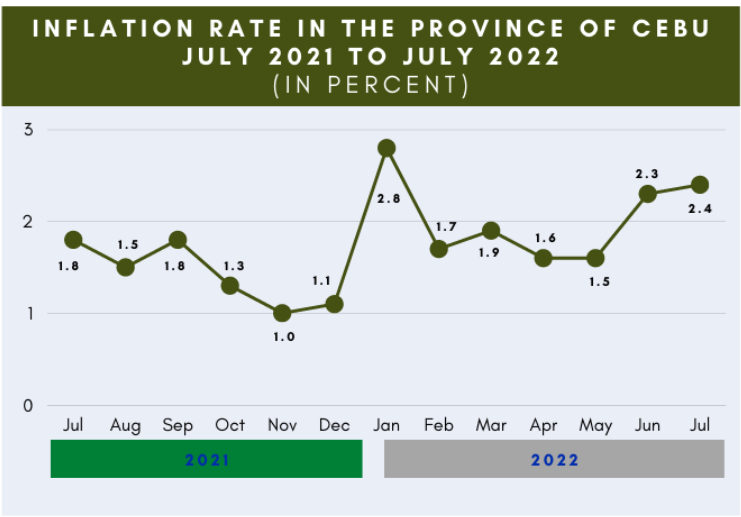


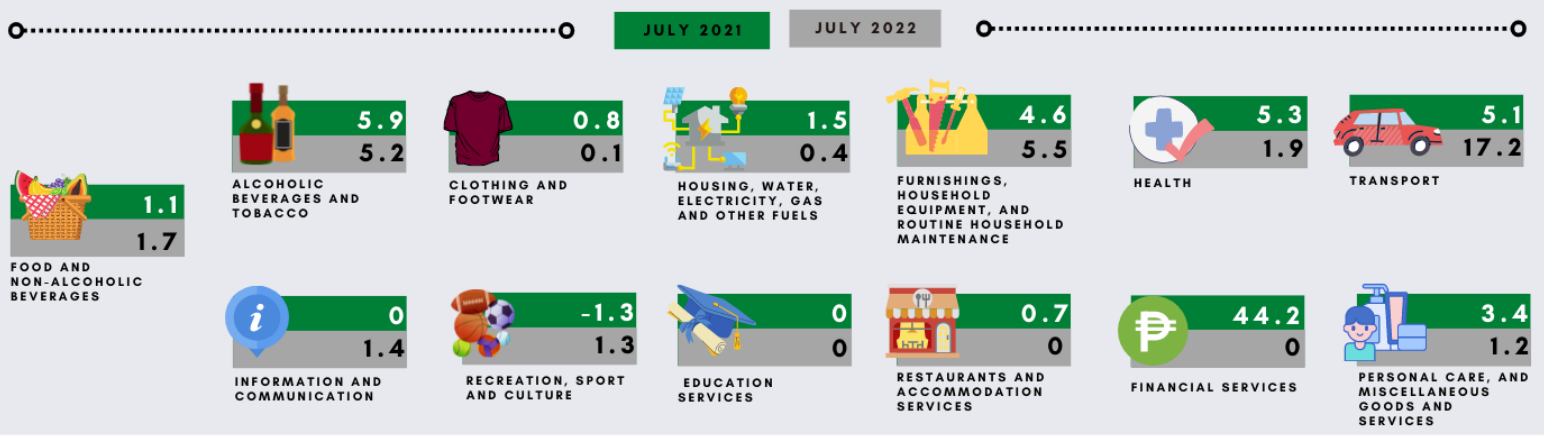


CONSUMER PRICE INDICES

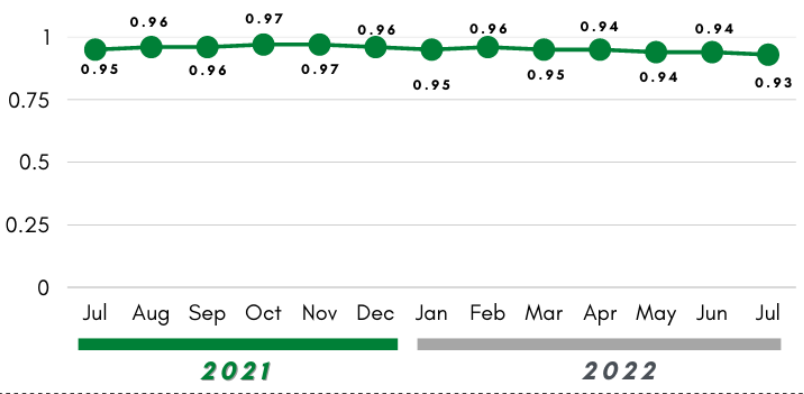
CITY OF CEBU



INFLATION RATE FOR ALL INCOME HOUSEHOLDS, BY COMMODITY GROUP



PURCHASING POWER OF PESO JULY 2021 TO JULY 2022 (IN PERCENT)



The **PURCHASING POWER OF THE PESO** is a measure of the real value of the peso in a given period relative to a chosen reference period. It is computed by getting the reciprocal of the CPI and multiplying the result by 100.