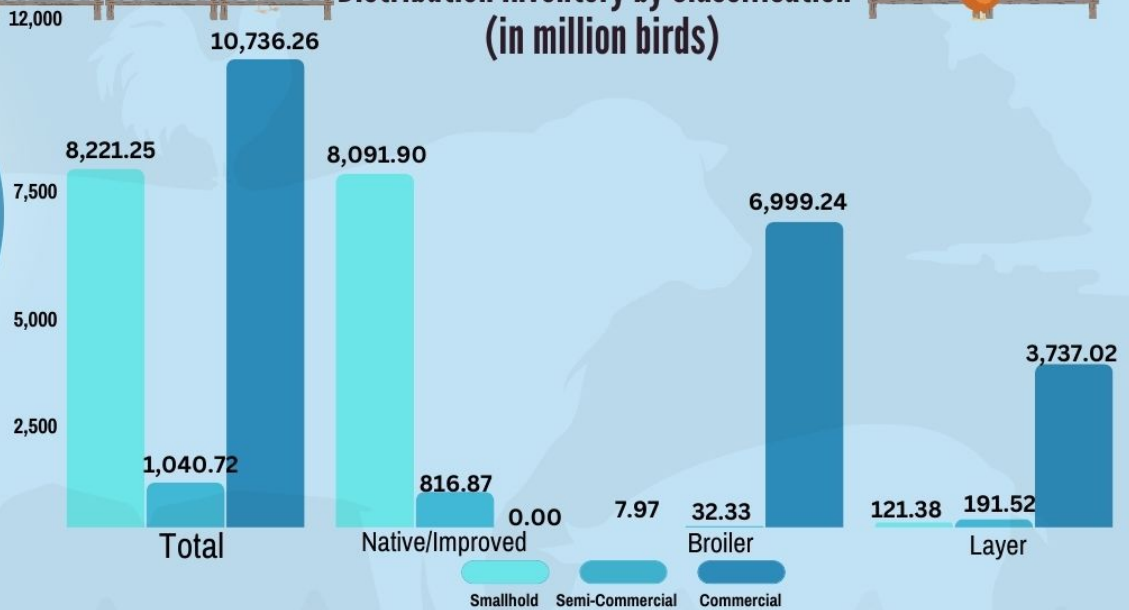


CHICKEN SITUATION REPORT IN CENTRAL VISAYAS as of July - September 2022^P

Distribution Inventory by Classification*
(in million birds)



Volume of Production**
(in thousand metric tons, liveweight)

Total: 32.48
2022^P

Growth Rate
(in Percent)

0.7%
2021

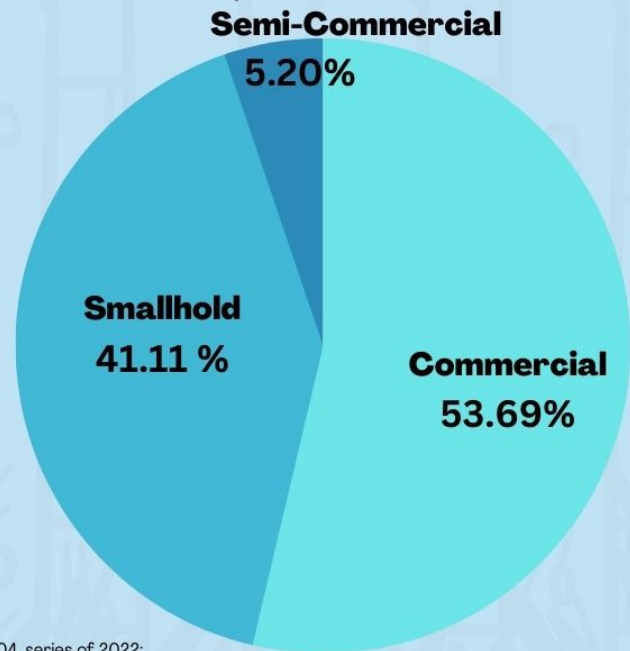
36.2%
2022^P

Top

5

Central Visayas is the fifth top producer of chicken among the regions in the country.

Total Inventory by Classification*
(in percent)



32.5%
Percent share to country's production

*Inventory refers to the actual number of chicken present on the farm as of a specific reference date.

The followings are the new farm classifications and definitions based on the approved PSA Board Resolution No. 04, series of 2022:

Broiler: **Smallhold farms** - Raising 500 birds and below.

Layer and Native/Improved: **Smallhold farms** - Raising 250 birds and below.

Semi-Commercial farms - Raising 501- 10,000 birds

Semi-Commercial farms - Raising 251- 5,000 birds

Commercial - Raising 10,001 birds and above

Commercial - Raising 5,001 birds and above

**Volume of Production refers to the number of tended/raised carabao disposed of for slaughter including animals shipped out for slaughter. This is expressed in metric tons, live weight.

P-Preliminary

Sources: Philippine Statistics Authority

Vectors: www.canva.com

2/F Gaisano Capital South Bldg.,
Colon St., Brgy. Kalubihan,
6000 Cebu City

(032) 412-6794

rso07.rso@psa.gov.ph
<http://rso07.psa.gov.ph>

Release Date: 29 May 2023
Reference No: 2023-IG07-011