



# CENTRAL VISAYAS

## INFLATION RATE FOR THE BOTTOM 30% INCOME HOUSEHOLDS, MARCH 2024 (2018=100)

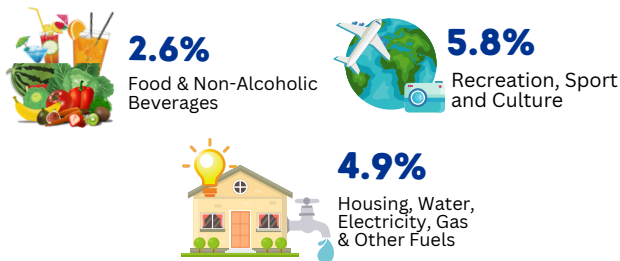
The families in the low-income bracket are the most vulnerable to economic and social difficulties. Monitoring the welfare of these families is one of the main thrusts of the government. Based on the "relative poverty" concept, a household whose per capita income falls below the bottom 30% of the cumulative per capita distribution belongs to the low-income group. The 2018=100 means the base year or base period at which the index is set to 100.



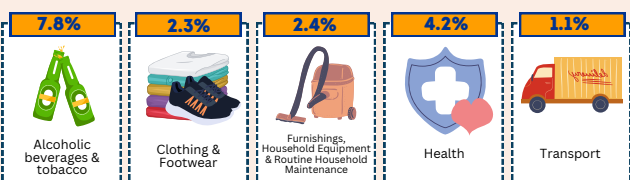
Inflation for the **Bottom 30% Income households** in Central Visayas increase to

**↑ 3.3%** from 2.8% in February 2024.  
in March 2024

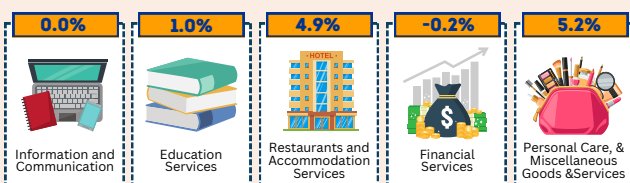
### Main Drivers to the Upward Trend of the Regional Inflation



Lower annual growth rates were noted in the indices of the following food groups during the month:

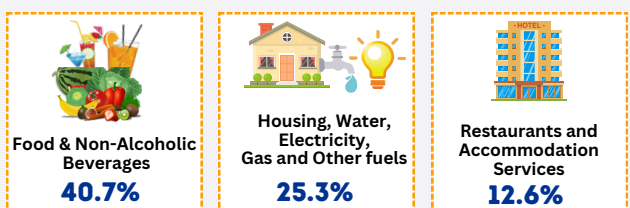


Commodity groups retained their previous month's rate:



### Main Contributors to the Regional Inflation

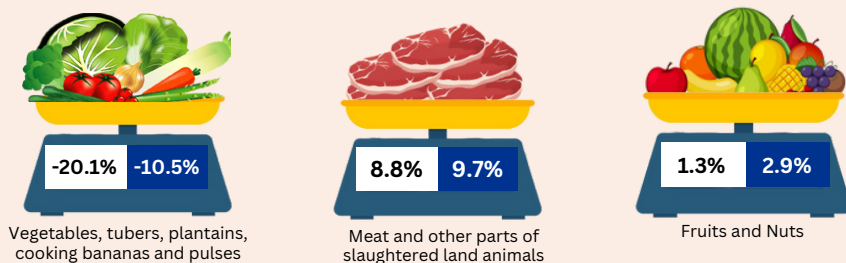
Top three contributors to the March 2024 overall inflation for the Bottom 30% Income Households



## FOOD INFLATION

Food inflation for the Bottom 30% Income Households at the regional level moved at a faster pace **2.5%** in March 2024 from **1.5 percent** in the previous month.

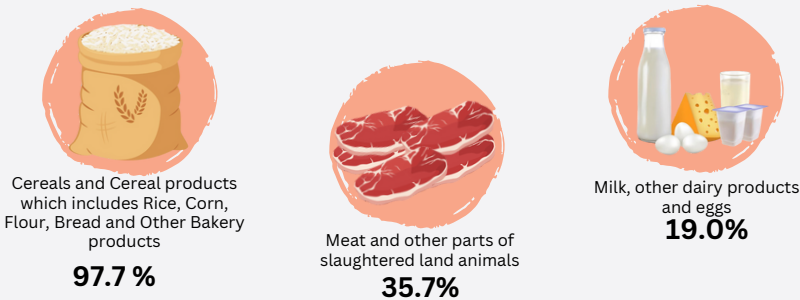
### Main Drivers to the Upward Trend of Food Inflation



FEBRUARY 2024      MARCH 2024

### Main Contributors to the Food Inflation

The main contributors to the food inflation during the month were the following:



## INFLATION RATE ACROSS PROVINCES

Among the Provinces and Highly Urbanized Cities (HUCs) in Central Visayas, **Province of Cebu** recorded the **lowest inflation** in March 2024 at **-0.3 percent** while **City of Mandaue** recorded the **highest inflation** during the month at **9.7 percent**.

